

PALMZ TWO ARRIVAL

MIAMI, FLORIDA

SE-3, 08 SEP 2022 to 06 OCT 2022

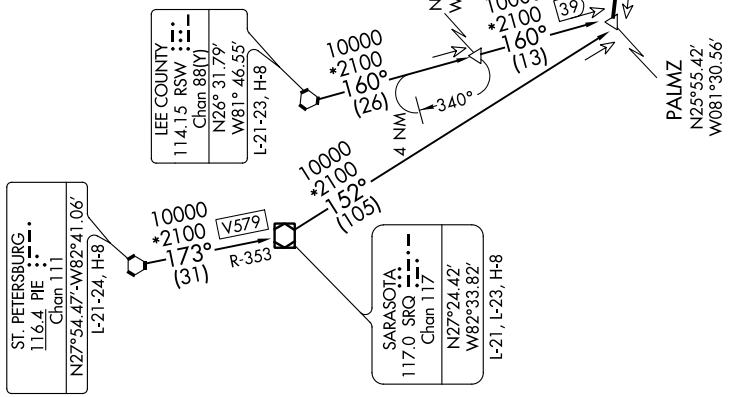
MIAMI APP CON
120.5 350.225
KHST ATIS*
132.275 269.9
MIA D-ATIS
119.15
OPF ATIS
125.9
TMB ATIS
124.0



ARRIVAL ROUTE DESCRIPTION

LEE COUNTY TRANSITION (RSW.PALMZ2): From over RSW VORTAC on RSW R-160 to PALMZ. Thence
 SARASOTA TRANSITION (SRQ.PALMZ2): From over SRQ VOR/DME on SRQ R-152 to PALMZ. Thence
 ST PETERSBURG TRANSITION (PIE.PALMZ2): From over PIE VORTAC on PIE R-173 and SRQ R-353 to SRQ VOR/DME then on SRQ R-152 to PALMZ. Thence
 landing all airports: From PALMZ on DOLPHIN VORTAC (DHP) R-281 to PRIVY, thence as depicted to DHP VORTAC.
 Expect RADAR vectors to final approach course.

RADAR required. DME required.



PALMZ TWO ARRIVAL

(PALMZ.PALMZ2) 02DEC21

MIAMI, FLORIDA

NOTE: Chart not to scale.

SE-3, 08 SEP 2022 to 06 OCT 2022