

VORTAC OED <b>113.6</b> Chan <b>83</b>	APP CRS <b>146°</b>	Rwy Idg <b>8800</b> TDZE <b>1303</b> Apt Elev <b>1335</b>
--	------------------------	--

# VOR/DME RWY 14

ROGUE VALLEY INTL-MEDFORD (MFR)

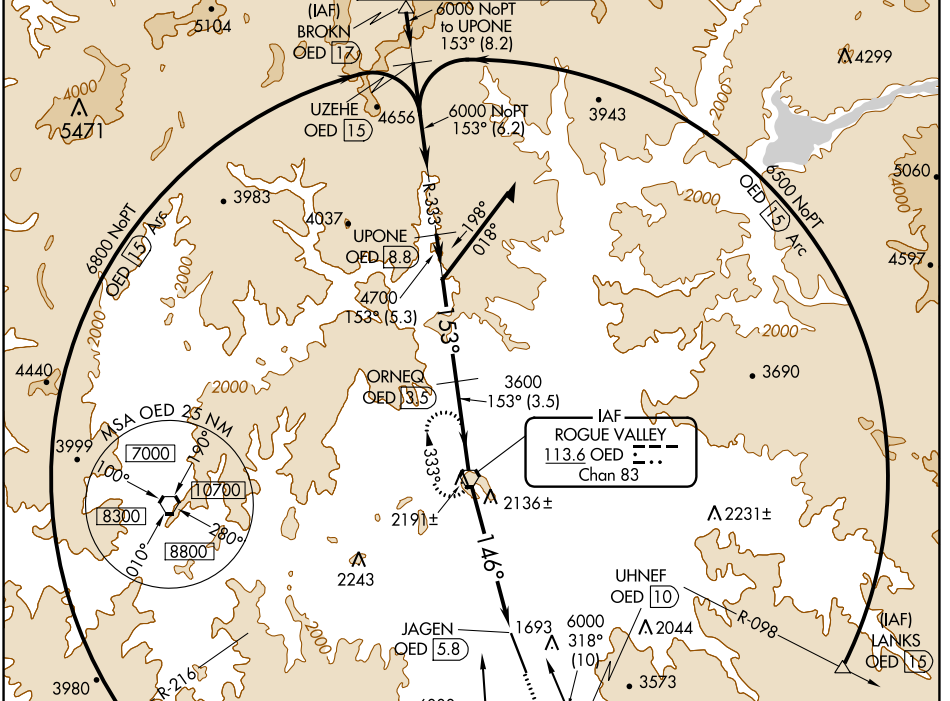
**▲** Inop table does not apply to S-14 Cat A. For inop MALSR increase S-14 Cat B visibility to 1½. Circling NA for Cats C and D northeast of Rwy 14-32.

**⚡** -3°C

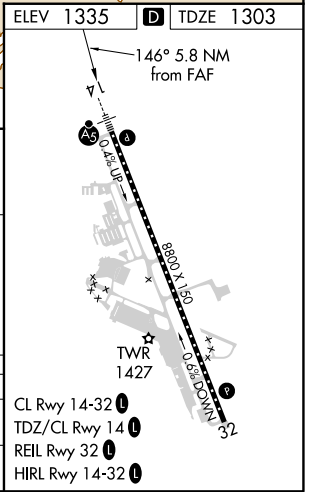
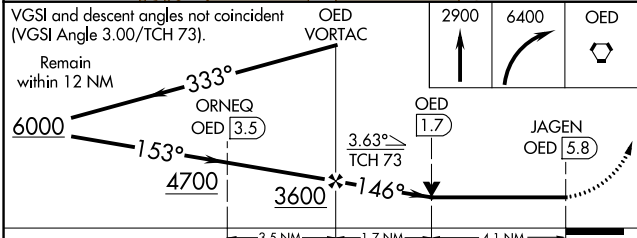
**MALSR**

**MISSED APPROACH:** Climb to 2900 then climbing right turn to 6400 direct OED VORTAC and hold, continue climb-in-hold to 6400.

ATIS <b>127.25</b>	CASCADE APP CON * <b>124.3 379.9</b>	MEDFORD TOWER * <b>119.4 (CTAF) 0 257.8</b>	GND CON <b>121.8</b>	UNICOM <b>122.95</b>
-----------------------	---	--	-------------------------	-------------------------



ELEV 1335	<b>D</b> TDZE 1303
-----------	--------------------



CATEGORY	A	B	C	D
S-14	2680/60	1377 (1400-1½)	2680-2½	1377 (1400-2½)
CIRCLING	2680-1¼ 1345 (1400-1¼)	2680-1½ 1345 (1400-1½)	2680-3	1345 (1400-3)

NW-1, 08 SEP 2022 to 06 OCT 2022

NW-1, 08 SEP 2022 to 06 OCT 2022

- CL Rwy 14-32 **1**
- TDZ/CL Rwy 14 **1**
- REIL Rwy 32 **1**
- HIRL Rwy 14-32 **1**