

# BLUBELL FOUR ARRIVAL

HOUSTON, TEXAS

SC-5, 08 SEP 2022 to 06 OCT 2022

**ARRIVAL ROUTE DESCRIPTION**

**COLLEGE STATION TRANSITION (CLL.BLUBL4):**  
From over CLL VORTAC on CLL R-153 to BLUBL. Thence . . . . .

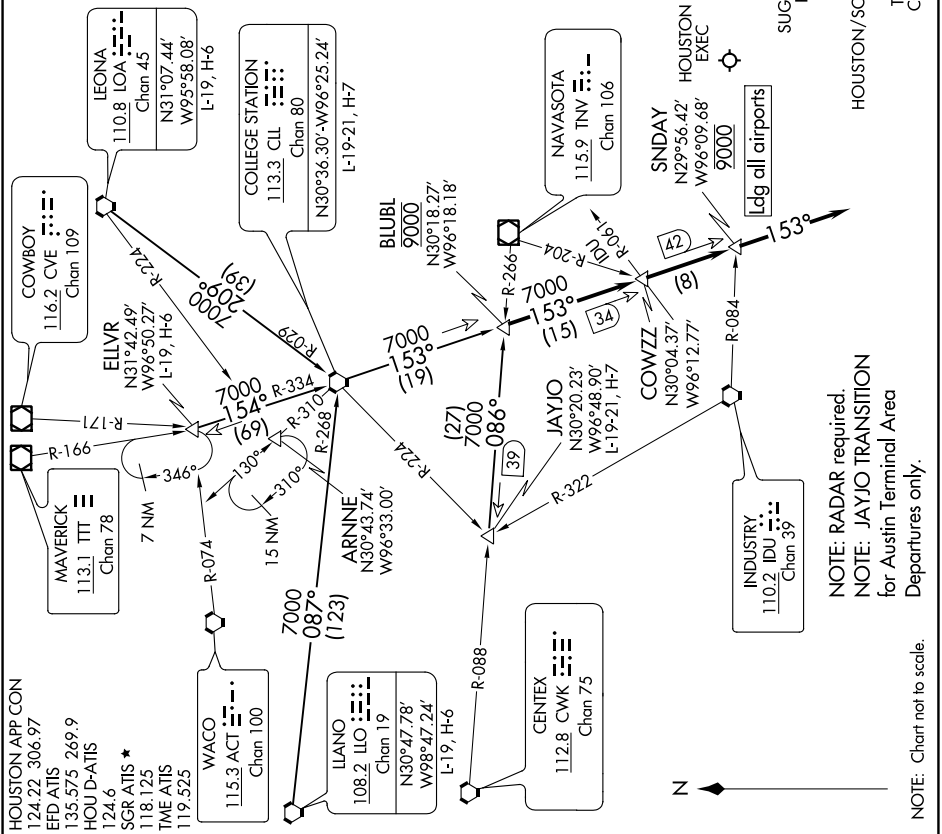
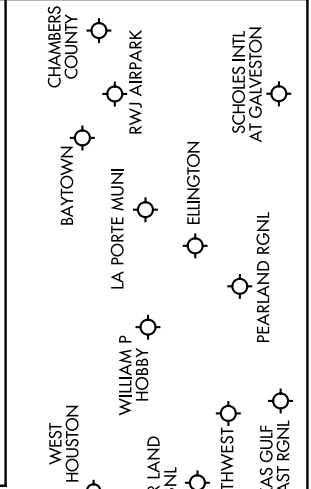
**ELIVR TRANSITION (ELIVR.BLUBL4):** From over ELIVR on CLL R-334 to CLL VORTAC, then on CLL R-153 to BLUBL. Thence . . . . .

**JAYJO TRANSITION (JAYJO.BLUBL4):** From over JAYJO on TNV R-266 to BLUBL. Thence . . . . .

**LEONA TRANSITION (LOA.BLUBL4):** From over LOA VORTAC on LOA R-209 and CLL R-029 to CLL VORTAC, then on CLL R-153 to BLUBL. Thence . . . . .

**ILANO TRANSITION (ILO.BLUBL4):** From over ILO VORTAC on ILO R-087 and CLL R-268 to CLL VORTAC, then on CLL R-153 to BLUBL. Thence . . . . .

. . . . . From over BLUBL on CLL R-153 to cross **SNDAY** at 9000, from **SNDAY** fly heading 153°. Expect vectors to final approach course at or prior to **SNDAY**.



SC-5, 08 SEP 2022 to 06 OCT 2022

# BLUBELL FOUR ARRIVAL

HOUSTON, TEXAS

NOTE: Chart not to scale.

NOTE: RADAR required  
for Austin Terminal Area  
Departures only.