

WAAS CH 90221 W21A	APP CRS 212°	Rwy Idg 10502 TDZE 3669 Apt Elev 3680
--	------------------------	--

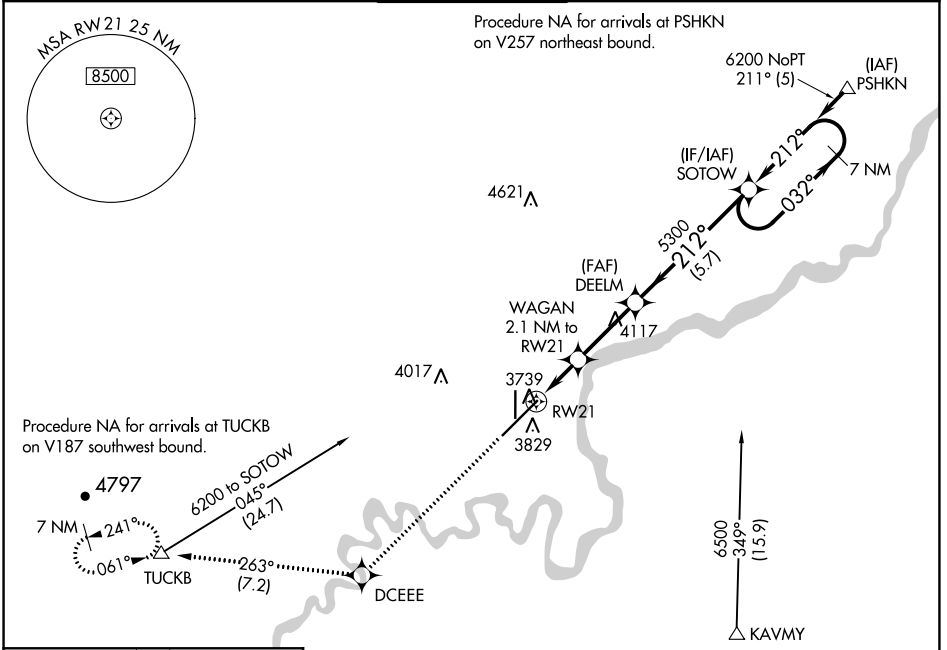
RNAV (GPS) Y RWY 21

GREAT FALLS INTL (GTF)

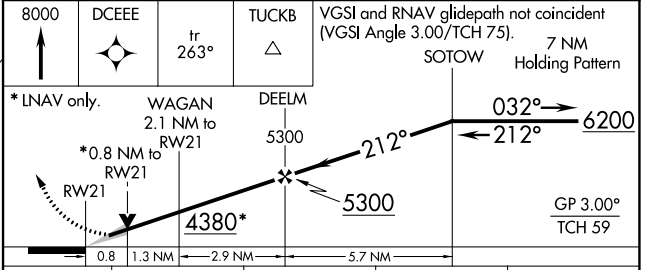
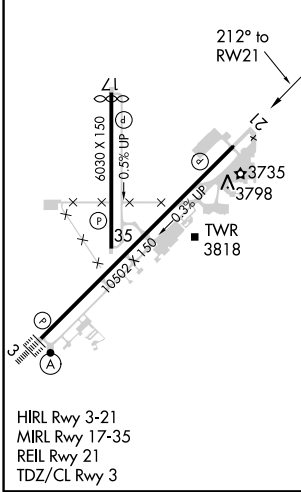
⚠ For uncompensated Baro-VNAV systems, LNAV/VNAV NA below -24°C (-11°F) or above 49°C (121°F). DME/DME RNP-0.3 NA.

MISSED APPROACH: Climb to 8000 direct DCEEE and on track 263° to TUCKB and hold, continue climb-in-hold to 8000.

ATIS 126.6 269.0	GREAT FALLS APP CON 128.6 379.175	GREAT FALLS TOWER 118.7 282.2	GND CON 121.7 348.6	CLNC DEL 121.7 348.6
----------------------------	---	---	-------------------------------	--------------------------------



ELEV 3680	D	TDZE 3669
-----------	----------	-----------



CATEGORY	A	B	C	D
LPV DA		3869/40	200 (200-¾)	
LNAV/VNAV DA		3927/45	258 (300-¾)	
LNAV MDA	4000/55	331 (400-1)	4000/50	331 (400-1)
C CIRCLING	4120-1 440 (500-1)	4140-1 460 (500-1)	4320-1¾ 640 (700-1¾)	4420-2¼ 740 (800-2¼)

NW-1, 08 SEP 2022 to 06 OCT 2022

NW-1, 08 SEP 2022 to 06 OCT 2022