

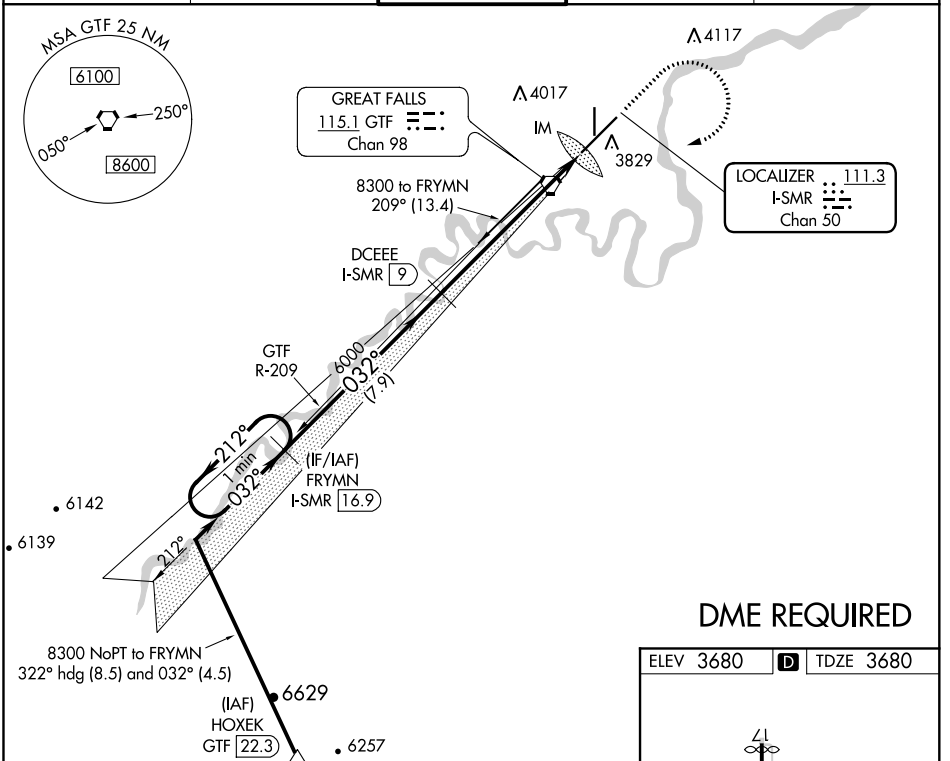
LOC/DME I-SMR 111.3 Chan 50	APP CRS 032°	Rwy Idg 10502 TDZE 3680 Apt Elev 3680
--	------------------------	--

ILS or LOC RWY 3

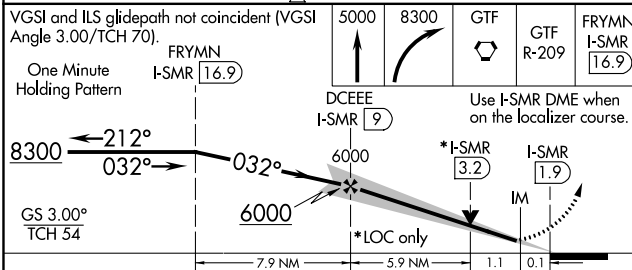
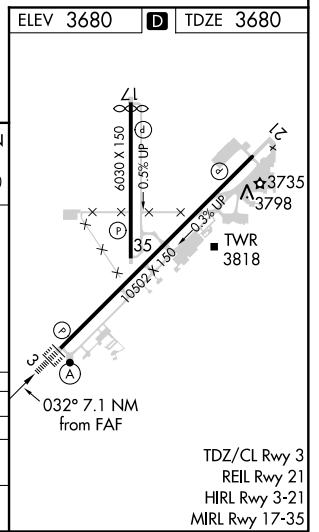
GREAT FALLS INTL (GTF)

	DME required.		MISSED APPROACH: Climb to 5000 then climbing right turn to 8300 direct GTF VORTAC then on GTF VORTAC R-209 to FRYMNI/I-SMR 16.9 DME and hold.	

ATIS 126.6 269.0	GREAT FALLS APP CON 128.6 379.175	GREAT FALLS TOWER 118.7 282.2	GND CON 121.7 348.6	CLNC DEL 121.7 348.6
----------------------------	---	---	-------------------------------	--------------------------------



DME REQUIRED



CATEGORY	A	B	C	D
S-ILS 3	3880/18		200 (200-½)	
S-LOC 3	4140/24	460 (500-½)	4140/45	460 (500-¾)
C CIRCLING	4140-1	460 (500-1)	4320-1¾ 640 (700-1¾)	4420-2¼ 740 (800-2¼)

TDZ/CL Rwy 3
REIL Rwy 21
HIRL Rwy 3-21
MIRL Rwy 17-35

NW-1, 08 SEP 2022 to 06 OCT 2022

NW-1, 08 SEP 2022 to 06 OCT 2022