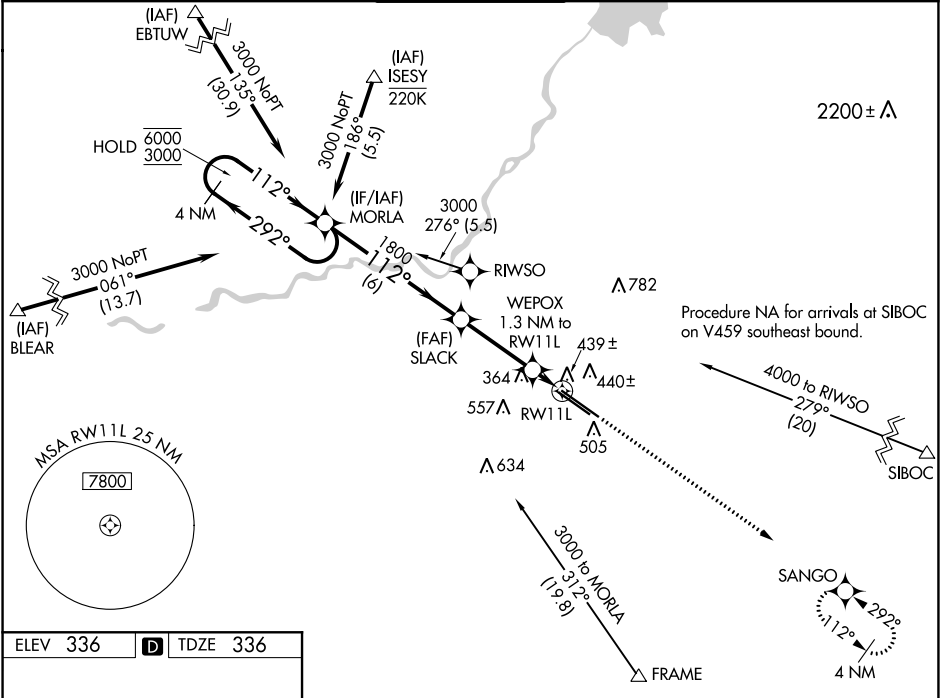


WAAS CH <b>77505</b> W11A	APP CRS <b>112°</b>	Rwy Idg <b>9279</b> TDZE <b>336</b> Apt Elev <b>336</b>
---------------------------------	------------------------	---

# RNAV (GPS) RWY 11L

FRESNO YOSEMITE INTL (FAT)

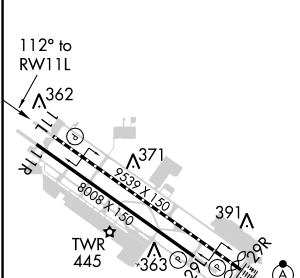
RNP APCH. ▼ For uncompensated Baro-VNAV systems, LNAV/VNAV NA below -1°C or above 54°C.		MISSED APPROACH: Climb to 2600 direct SANGO and hold.		
ATIS <b>121.35 273.6</b>	FRESNO APP CON <b>119.6 351.95</b>	FRESNO TOWER <b>118.2 251.1</b>	GND CON <b>121.7 348.6</b>	CLNC DEL <b>124.35 348.6</b>



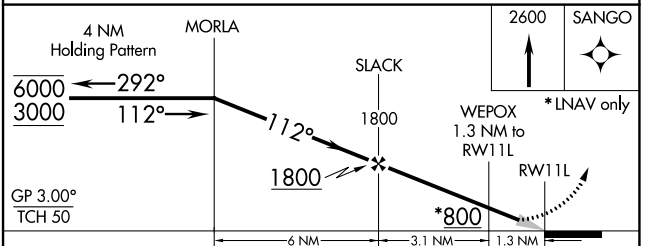
SW-2, 08 SEP 2022 to 06 OCT 2022

SW-2, 08 SEP 2022 to 06 OCT 2022

ELEV 336	<b>D</b>	TDZE 336
----------	----------	----------



REIL Rwsy 11L and 11R HIRL Rwy 11L-29R MIRL Rwy 11R-29L TDZ/CL Rwy 29R
---



CATEGORY	A	B	C	D
LPV DA		536/40	200 (200-3/4)	
LNAV/VNAV DA		620/45	284 (300-7/8)	
LNAV MDA		700/55	364 (400-1)	
<b>C</b> CIRCLING	820-1	484 (500-1)	920-1 1/2 584 (600-1 1/2)	920-2 584 (600-2)