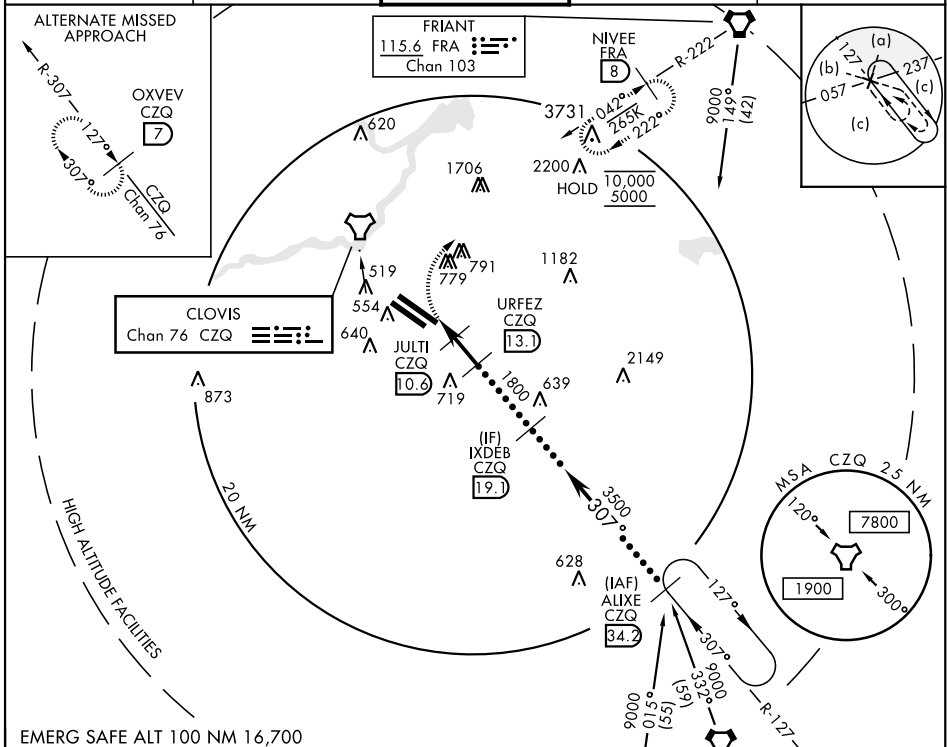


TACAN CZQ Chan 76	APCH CRS 307°	Rwy ldg 29R 9227 TDZE 29R 333 Arprt Elev 336	29L 8008 29L 331
----------------------	------------------	--	---------------------

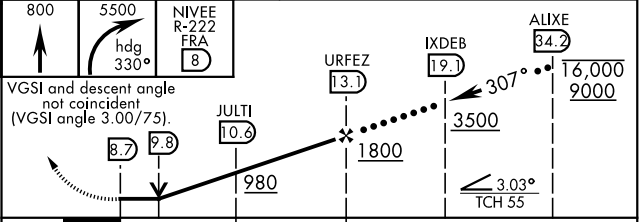
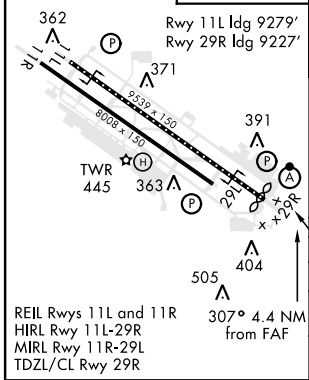
AL-162 [USAF] FRESNO YOSEMITE INTL (KFAT)

DME required. MISSED APPROACH: Climb to 800 then climbing right turn to 5500 on heading 330° and FRA VORTAC R-222 to NIVEE INT/FRA 8 DME and hold, continue climb-in-hold to 5500.

ATIS 121.35 273.6	APP CON 132.35 323.25	TOWER 118.2 251.1	GND CON 121.7 348.6	CLNC DEL 124.35 348.6
----------------------	--------------------------	----------------------	------------------------	--------------------------



ELEV 336	TDZE 29R 333
	TDZE 29L 331



CATEGORY	C	D	E
S-29R *	760/40	427	(500-34)
SIDESTEP 29L	760-1½ 429 (500-1½)	760-2	429 (500-2)
CIRCLING	920-1½ 584 (600-1½)	920-2 584 (600-2)	1140-2¾ 804 (900-2¾)

SW-2, 08 SEP 2022 to 06 OCT 2022

SW-2, 08 SEP 2022 to 06 OCT 2022