

FRESNO, CALIFORNIA

# HI-TACAN RWY 11L

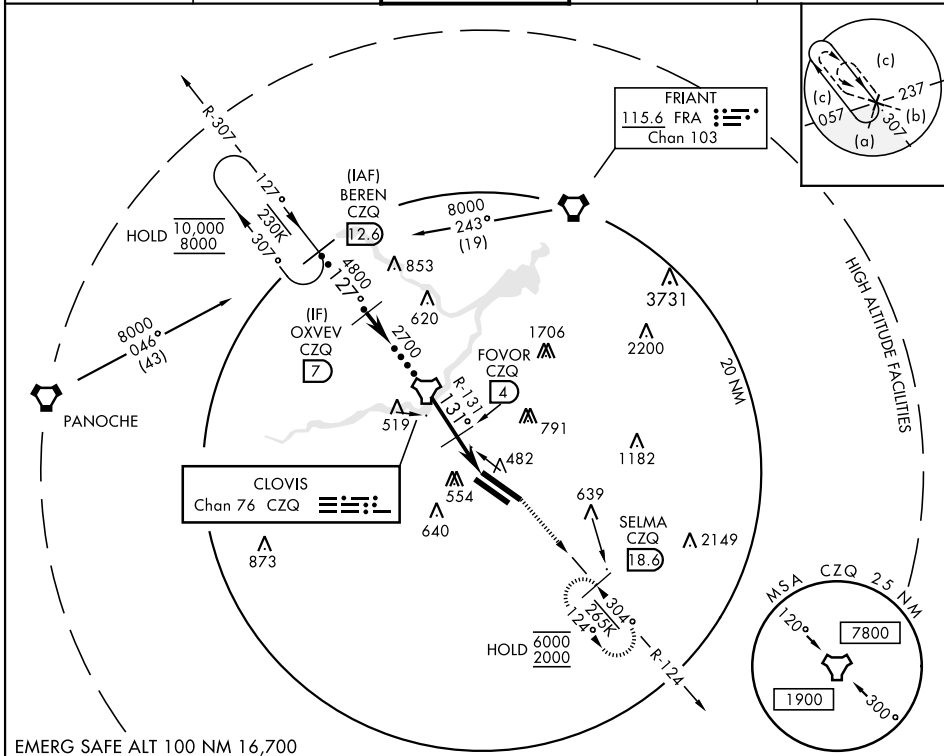
TACAN CZQ Chan <b>76</b>	APCH CRS <b>131°</b>	Rwy Idg TDZE Arprt Elev	11L <b>9279</b> 11L <b>336</b> <b>336</b>	11R <b>8008</b> 11R <b>333</b> <b>333</b>
-----------------------------	-------------------------	-------------------------------	---	---

AL-162 [USAF] FRESNO YOSEMITE INTL (KFAT)

DME required.

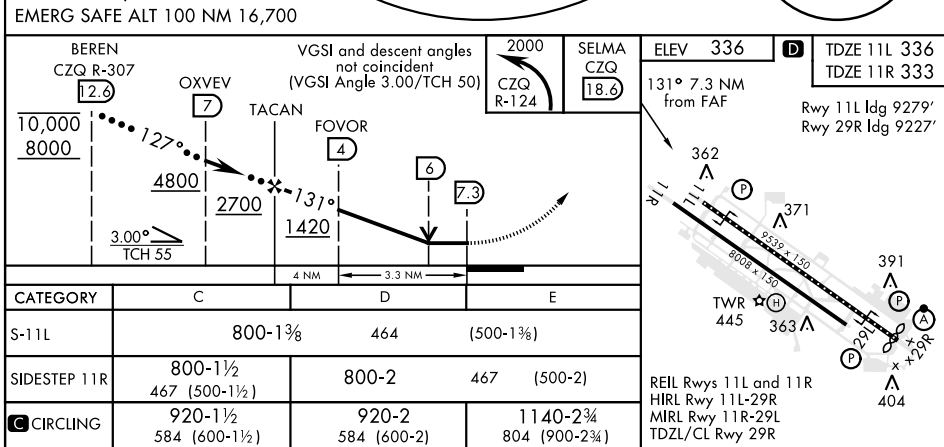
MISSED APPROACH: Climbing left turn to 2000 on CZQ TACAN R-124 to SELMA / 18.6 DME and hold.

ATIS <b>121.35 273.6</b>	APP CON <b>119.6 351.95</b>	TOWER <b>118.2 251.1</b>	GND CON <b>121.7 348.6</b>	CLNC DEL <b>124.35 348.6</b>
-----------------------------	--------------------------------	-----------------------------	-------------------------------	---------------------------------



SW-2, 08 SEP 2022 to 06 OCT 2022

SW-2, 08 SEP 2022 to 06 OCT 2022



FRESNO, CALIFORNIA

36° 47' N - 119° 43' W

FRESNO YOSEMITE INTL (KFAT)

Amdt 2A 10OCT19

# HI-TACAN RWY 11L