

FRESNO, CALIFORNIA

# HI-ILS Z or LOC Z RWY 29R

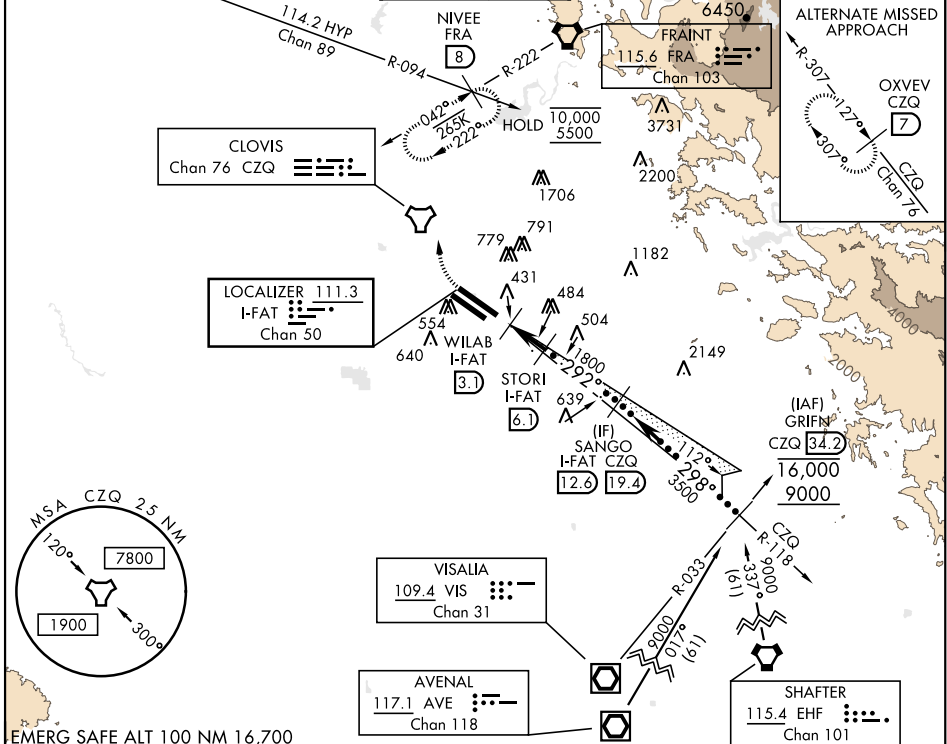
LOC/DME I-FAT <b>111.3</b> Chan <b>50</b>	APCH CRS <b>292°</b>	Rwy Idg 29R <b>9227</b> 29L <b>8008</b>	TDZE 29R <b>333</b> 29L <b>331</b>	Arpt Elev <b>336</b>
---	-------------------------	---	--	-------------------------

AL-162 [USAF] FRESNO YOSEMITE INTL (KFAT)

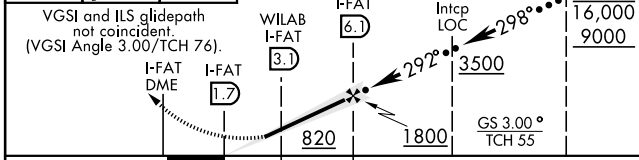
DME required. **ALS-F-2** MISSED APPROACH: Climb to 800, then climbing right turn to 5500 on heading 330° and FRA VORTAC R-222 to NIVEE int (FRA 8 DME) and hold, continue climb-in-hold to 5500.

\* When ALS inop, incr CAT CDE RVR to 40 and vis to 3/4 mile.  
\*\* When ALS inop, incr CAT CDE RVR to 55 and vis to 1 mile.

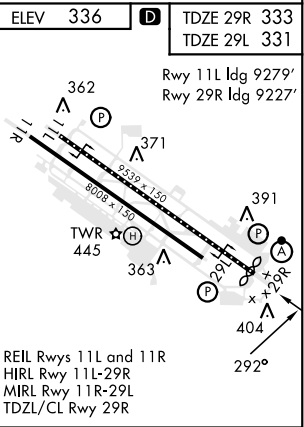
ATIS <b>121.35 273.6</b>	APP CON <b>132.35 323.25</b>	TOWER <b>118.2 251.1</b>	GND CON <b>121.7 348.6</b>	CLNC DEL <b>124.35 348.6</b>
-----------------------------	---------------------------------	-----------------------------	-------------------------------	---------------------------------



800	5500	NIVEE R-222 FRA (8)	Use I-FAT DME when on LOC course.	SANGO I-FAT CZQ (12.6 19.4)	GRIFN CZQ R-118 (34.2)	ELEV 336	TDZE 29R 333	TDZE 29L 331
-----	------	---------------------	-----------------------------------	-----------------------------	------------------------	----------	--------------	--------------



CATEGORY	C	D	E
S-ILS 29R*	533/18	200	(200-1/2)
S-LOC 29R**	700/35	367	(400-3/4)
SIDE STEP RWY 29L	700-1 1/2 369 (400-1 1/2)	700-2	369 (400-2)
CIRCLING	920-1 1/2 584 (600-1 1/2)	920-2 584 (600-2)	1140-2 3/4 804 (900-2 3/4)



FRESNO, CALIFORNIA  
Amdt 4A 08SEP22

36°47'N-119°43'W

FRESNO YOSEMITE INTL (KFAT)

# HI-ILS Z or LOC Z RWY 29R

SW-2, 08 SEP 2022 to 06 OCT 2022

SW-2, 08 SEP 2022 to 06 OCT 2022