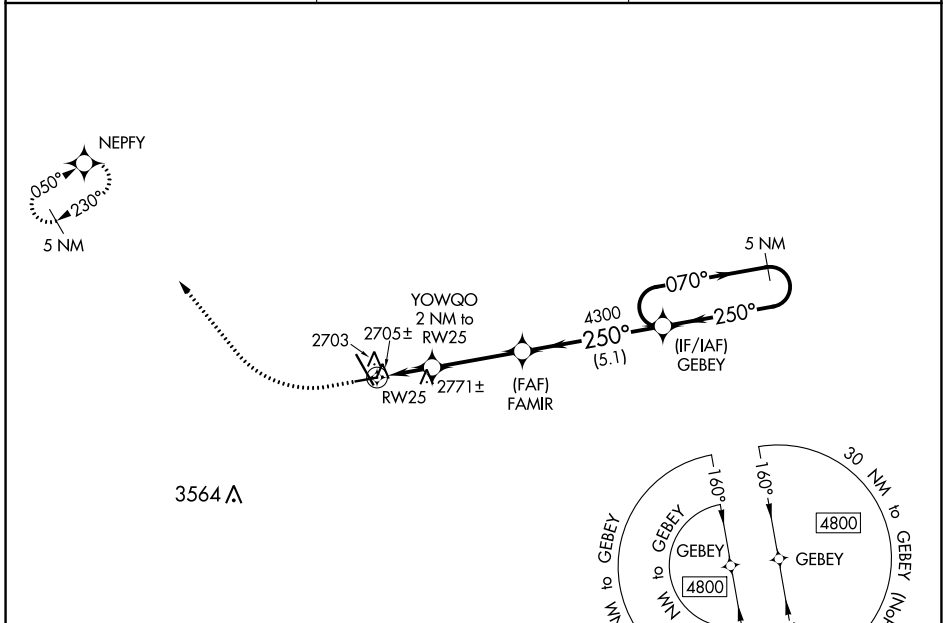


WAAS CH 82534 W25A	APP CRS 250°	Rwy Idg TDZE Apt Elev	4700 2592 2592
--	------------------------	-----------------------------	---

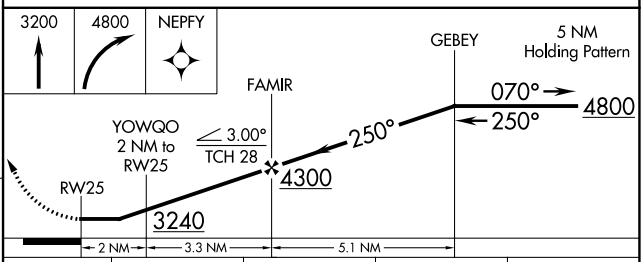
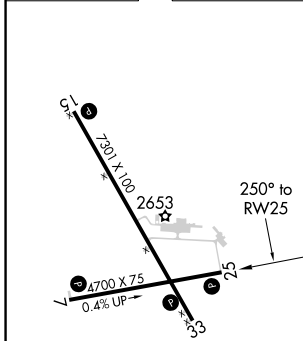
RNAV (GPS) RWY 25

DICKINSON/THEODORE ROOSEVELT RGNL (DIK)

RNP APCH.		MISSED APPROACH: Climb to 3200 then climbing right turn to 4800 direct NEPFY and hold.
ASOS 118.375	MINNEAPOLIS CENTER 124.25 236.825	UNICOM 123.0 (CTAF) 0



ELEV	2592	D	TDZE	2592
------	------	----------	------	------



CATEGORY	A	B	C	D
LP MDA	2980-1	388 (400-1)	2980-1½	388 (400-1½)
LNAV MDA	3060-1	468 (500-1)	3060-1¾	468 (500-1¾)
C CIRCLING	3080-1 488 (500-1)	3100-1 508 (600-1)	3120-1½ 528 (600-1½)	3220-2 628 (700-2)

REIL Rwy 7, 15 and 25 **L**
REIL Rwy 33
MIRL Rwy 7-25 and 15-33 **L**

NC-1, 08 SEP 2022 to 06 OCT 2022

NC-1, 08 SEP 2022 to 06 OCT 2022