

WAAS CH <b>56444</b> <b>W32A</b>	APP CRS <b>321°</b>	Rwy Idg TDZE <b>284</b> Apt Elev <b>284</b>	<b>3095</b> <b>284</b> <b>284</b>
--	------------------------	---	---

# RNAV (GPS) RWY 32

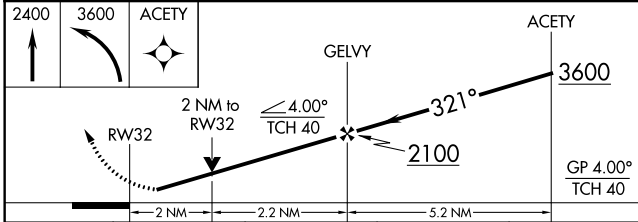
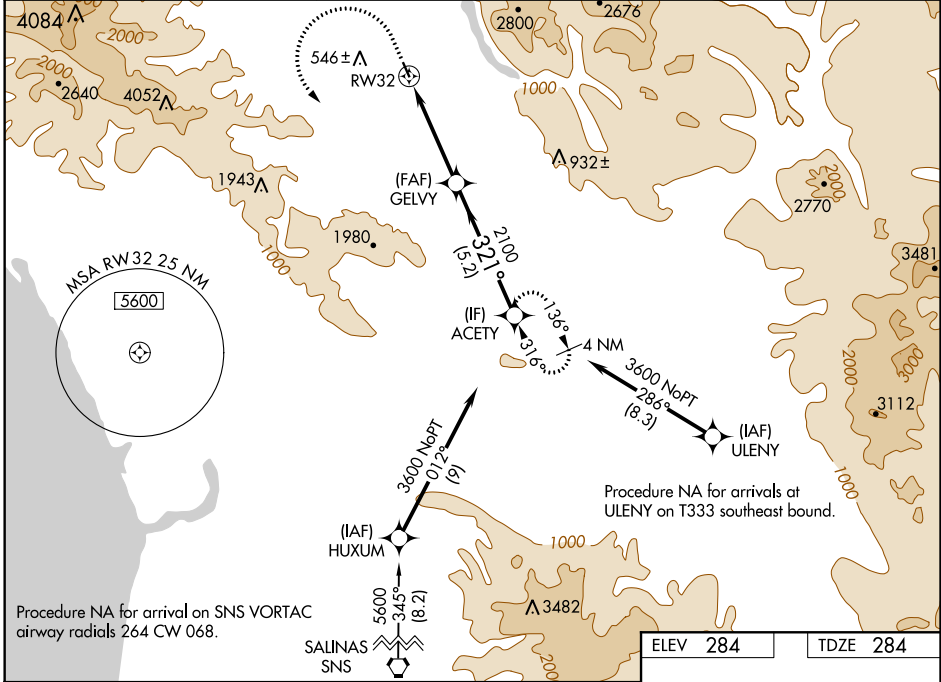
SAN MARTIN (E16)

RNP APCH - GPS.

**⚠** Circling NA southwest of Rwy 14-32. Rwy 32 helicopter visibility reduction below 3/4 SM NA.

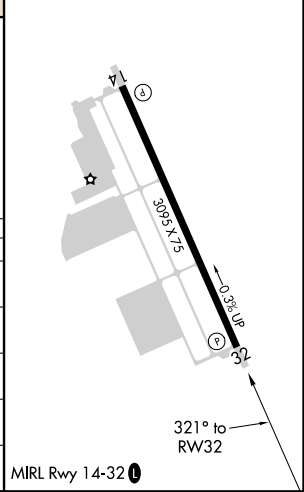
MISSED APPROACH: Climb to 2400 then climbing left turn to 3600 direct ACETY and hold.  
\*Missed approach requires minimum climb of 260 feet per NM to 2400.

AWOS-3P <b>118.35</b>	NORCAL APP CON <b>124.525 348.675</b>	UNICOM <b>122.7 (CTAF) 0</b>
--------------------------	--	---------------------------------



ELEV 284	TDZE 284
----------	----------

CATEGORY	A	B	C	D
LPV DA*	600-7/8	316 (400-7/8)		NA
LPV DA	954-1 7/8	670 (700-1 7/8)		NA
LNAV MDA*	1060-1 776 (800-1)	1060-1 1/4 776 (800-1 1/4)		NA
LNAV MDA	1320-1 1/4 1036 (1100-1 1/4)	1320-1 1/2 1036 (1100-1 1/2)		NA
<b>C</b> CIRCLING	1320-1 1/4 1036 (1100-1 1/4)	1320-1 1/2 1036 (1100-1 1/2)		NA



SW-2, 14 JUL 2022 to 11 AUG 2022

SW-2, 14 JUL 2022 to 11 AUG 2022