

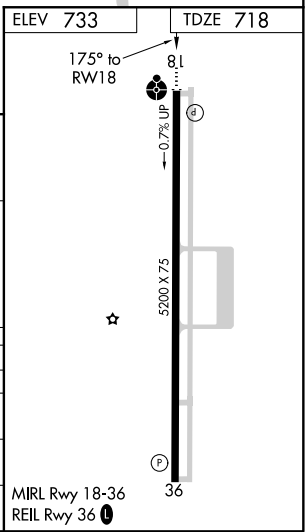
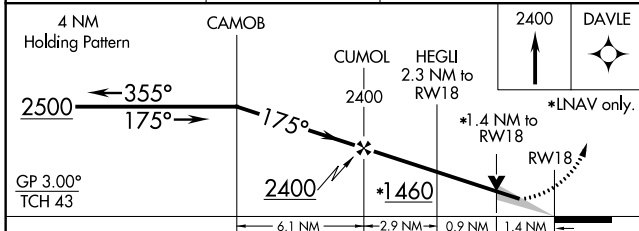
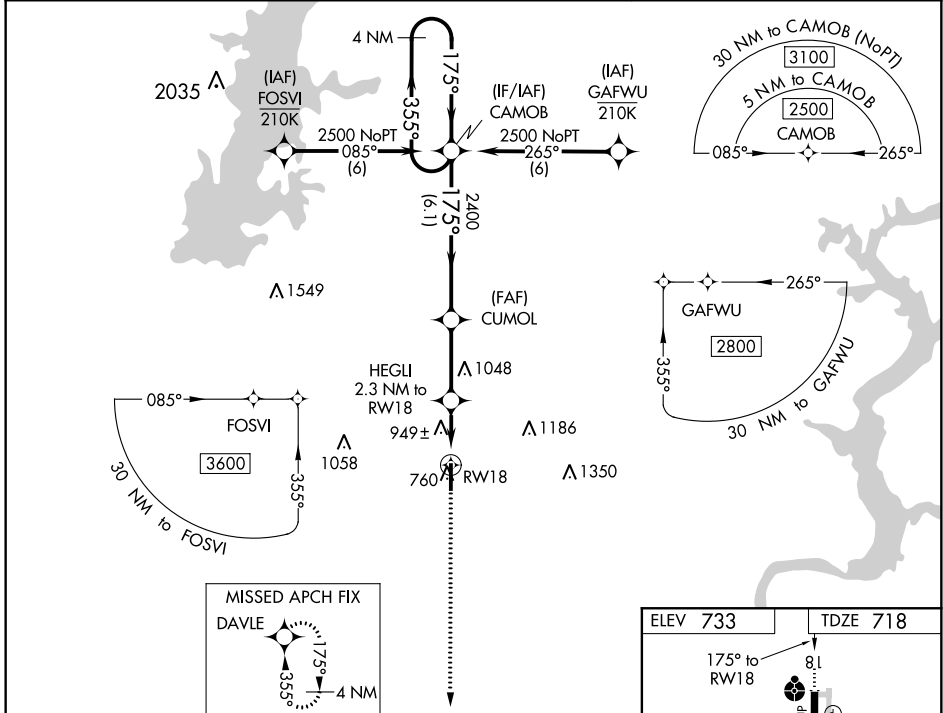
WAAS CH <b>63214</b> <b>W18A</b>	APP CRS <b>175°</b>	Rwy Idg <b>5200</b> TDZE <b>718</b> Apt Elev <b>733</b>
--	------------------------	---

# RNAV (GPS) RWY 18

CLAREMORE RGNL (GCM)

<p>For uncompensated Baro-VNAV systems, LNAV/VNAV NA below -16°C (4°F) or above 54°C (130°F). DME/DME RNP-0.3 NA. For inop ALS, increase LNAV/VNAV Cats A/B visibility to 1% SM.</p>	ODALS	MISSED APPROACH: Climb to 2400 direct DAVLE and hold.

AWOS-3P <b>119.925</b>	TULSA APP CON <b>119.1 360.825</b>	UNICOM <b>122.7 (CTAF) 0</b>
---------------------------	---------------------------------------	---------------------------------



CATEGORY	A	B	C	D
LPV DA	968-3/4	250 (300-3/4)		NA
LNAV/VNAV DA	1281-1 1/2	563 (600-1 1/2)		NA
LNAV MDA	1200-3/4	482 (500-3/4)	1200-1 1/4 482 (500-1 1/4)	NA
<b>C</b> CIRCLING	1260-1	527 (600-1)	1380-1 3/4 647 (700-1 3/4)	NA

SC-1, 14 JUL 2022 to 11 AUG 2022

SC-1, 14 JUL 2022 to 11 AUG 2022