

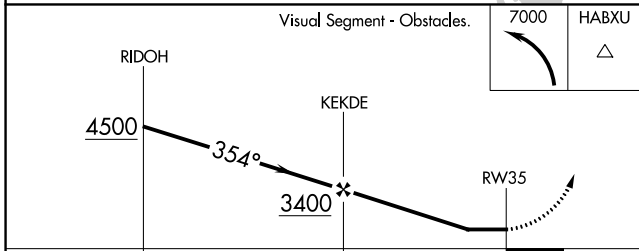
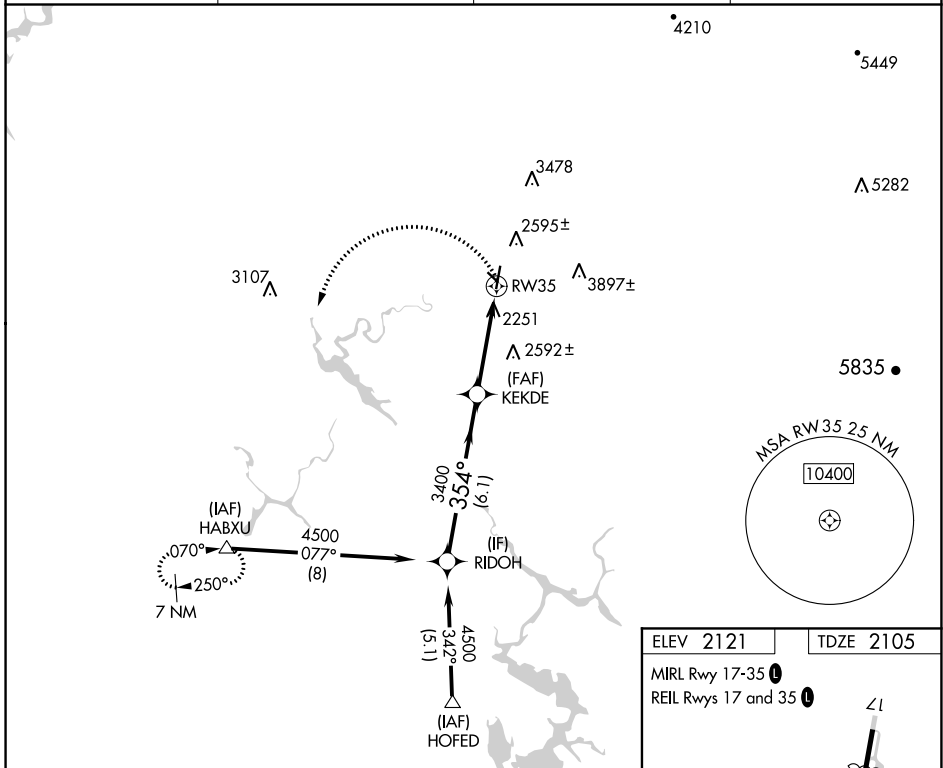
APP CRS	Rwy Idg	4289
354°	TDZE	2105
	Apt Elev	2121

RNAV (GPS) RWY 35

COLUMBIA (O22)

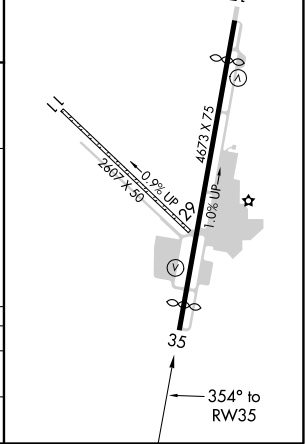
RNP APCH.	<p>▼ Circling NA to Rwys 11 and 29. Circling NA east of Rwy 17-35. Procedure NA at night. Rwy 35 helicopter visibility reduction below 1 SM NA.</p>	<p>MISSED APPROACH: Climbing left turn to 7000 direct HABXU and hold, continue climb-in-hold to 7000.</p>
-----------	---	---

AWOS-3 124.65	NORCAL APP CON 125.1 363.2 (NORTH/WEST)	OAKLAND CENTER 121.25 327.0 (EAST/SOUTH)	UNICOM 122.975 (CTAF) 0
-------------------------	---	--	--



ELEV 2121	TDZE 2105
-----------	-----------

MIRL Rwy 17-35 **0**
REIL Rws 17 and 35 **0**



CATEGORY	A	B	C	D
LNVA MDA	3140-1¼ 1035 (1100-1¼)	3140-1½ 1035 (1100-1½)	3140-3 1035 (1100-3)	NA
C CIRCLING	3140-1¼ 1019 (1100-1¼)	3140-1½ 1019 (1100-1½)	3140-3 1019 (1100-3)	NA

SW-2, 14 JUL 2022 to 11 AUG 2022

SW-2, 14 JUL 2022 to 11 AUG 2022