

WAAS CH 87129 W19A	APP CRS 189°	Rwy Idg TDZE Apt Elev	4502 898 898
--	------------------------	-----------------------------	---

RNAV (GPS) RWY 19

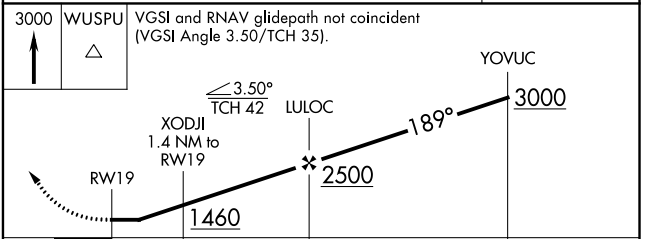
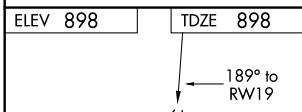
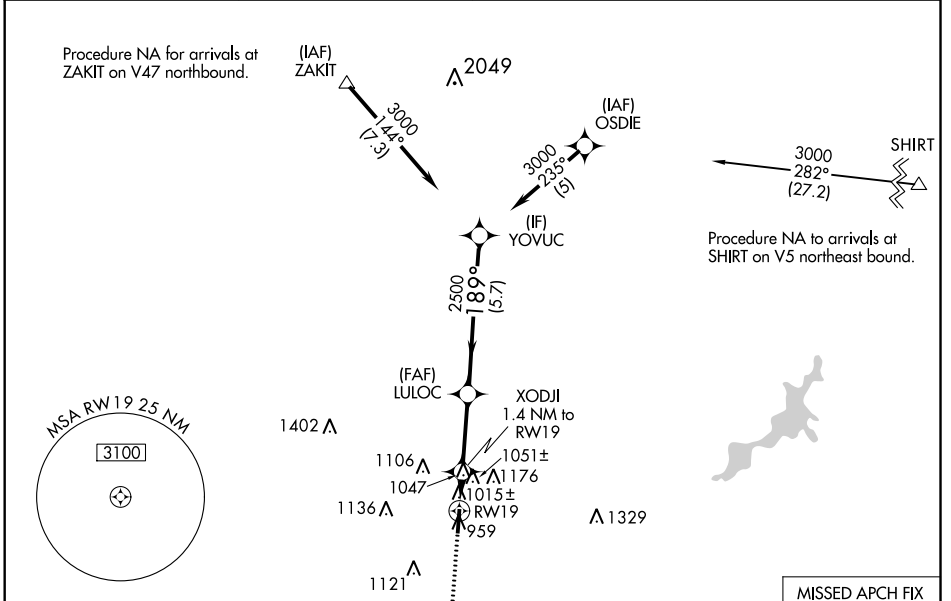
WARREN COUNTY/JOHN LANE FLD (I68)

RNP APCH.

NA Rwy 19 helicopter visibility reduction below 1 SM NA. When local altimeter setting not received, use Dayton-Wright Brothers altimeter setting and increase all MDAs 40 feet, and LP and LNAV Cat C and D visibilities 1/8 SM and Circling Cat C visibility 1/4 SM. Straight-in Rwy 19 and Circling Rwy 19 at night, operational VGSI required, remain on or above VGSI glidepath until threshold.

MISSED APPROACH: Climb to 3000 direct WUSPU and hold.

AWOS-3 120.55	COLUMBUS APP CON 118.85 269.275	CLNC DEL 119.4	UNICOM 123.075 (CTAF) 0
-------------------------	---	--------------------------	-----------------------------------



	A	B	C	D
LP MDA	1280-1	382 (400-1)	1280-1 1/8	382 (400-1 1/8)
LNAV MDA	1320-1	422 (500-1)	1320-1 1/4	422 (500-1 1/4)
C CIRCLING	1400-1 502 (600-1)	1480-1 582 (600-1)	1480-1 1/2 582 (600-1 1/2)	1480-2 582 (600-2)

EC-2, 14 JUL 2022 to 11 AUG 2022

EC-2, 14 JUL 2022 to 11 AUG 2022