

LOM MW 223	APP CRS 158°	Rwy ldg TDZE Apt Elev	N/A N/A 898
----------------------	------------------------	-----------------------------	--

NDB-A

WARREN COUNTY/JOHN LANE FLD (I68)

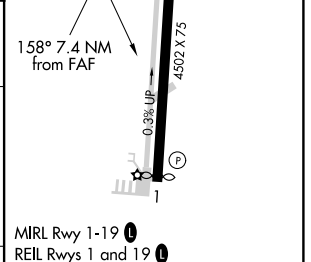
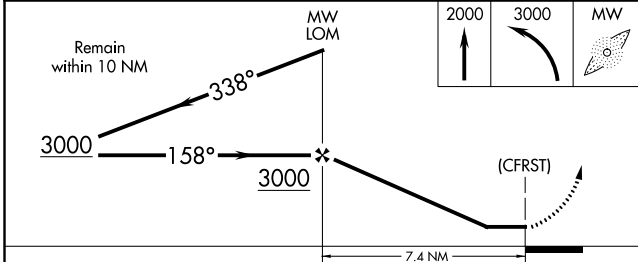
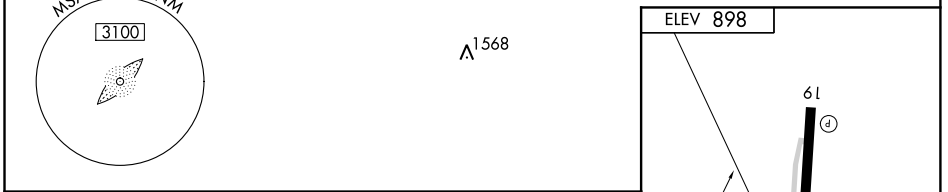
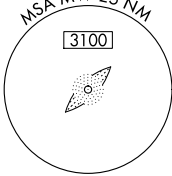
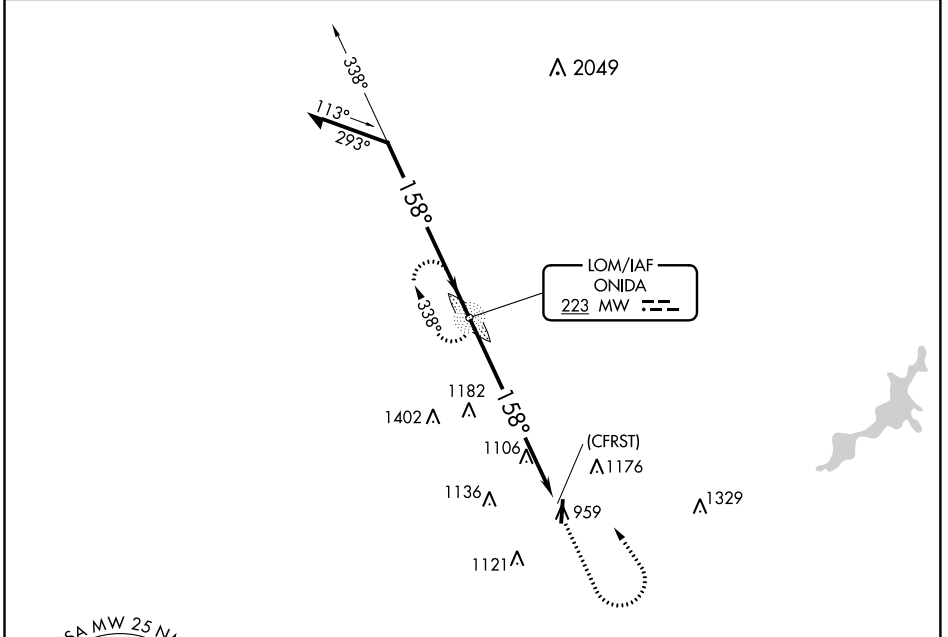
RADAR required for procedure entry.

▼ When Circling to Rwy 19 at night, operational VGSI required, remain on or above VGSI glidepath until threshold.

▲ NA

MISSED APPROACH: Climb to 2000 then climbing left turn to 3000 direct MW LOM and hold.

AWOS-3 120.55	COLUMBUS APP CON 118.85 269.275	CLNC DEL 119.4	UNICOM 123.075 (CTAF) 0
-------------------------	---	--------------------------	-----------------------------------



CATEGORY	A	B	C	D	FAF to MAP 7.4 NM					
CIRCLING	1680-1	782 (800-1)	1680-2¼ 782 (800-2¼)	1680-2½ 782 (800-2½)	Knots	60	90	120	150	180
					Min:Sec	7:24	4:56	3:42	2:58	2:28

NDB-A

EC-2, 14 JUL 2022 to 11 AUG 2022

EC-2, 14 JUL 2022 to 11 AUG 2022