

WAAS CH <b>77516</b> <b>W35A</b>	APP CRS <b>355°</b>	Rwy Idg TDZE <b>25</b> Apt Elev <b>25</b>	<b>7000</b>
--	------------------------	---	-------------

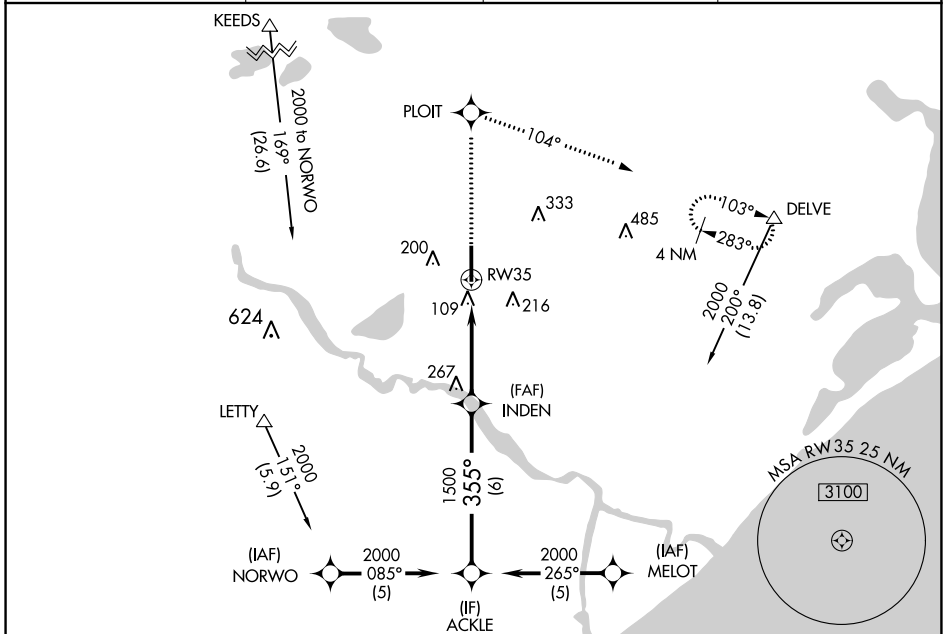
# RNAV (GPS) RWY 35

TEXAS GULF COAST RGNL (L.B.X)

**⚠** DME/DME RNP-0.3 NA. Baro-VNAV NA below -16°C (4°F). When local altimeter setting not received, use William P. Hobby altimeter setting and increase all DAs/MDAs 100 feet and Circling Cat D visibility ¼ SM. Baro-VNAV and VDP NA when using William P. Hobby altimeter setting. Circling NA east of Rwy 17-35.

**MISSED APPROACH:** Climb to 2000 direct PLOT and right turn via 104° track to DELVE and hold.

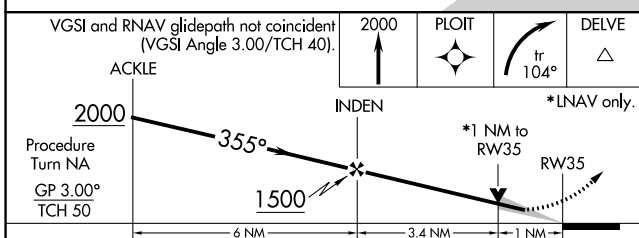
ASOS <b>119.925</b>	HOUSTON APP CON <b>134.45 284.0</b>	CLNC DEL <b>125.2</b>	UNICOM <b>123.0 (CTAF) 0</b>
------------------------	--	--------------------------	---------------------------------



SC-5, 14 JUL 2022 to 11 AUG 2022

SC-5, 14 JUL 2022 to 11 AUG 2022

ELEV <b>25</b>	<b>D</b> TDZE <b>25</b>
----------------	-------------------------



CATEGORY	A	B	C	D
LPV DA		275-¾	250 (300-¾)	
LNAV/VNAV DA		428-1½	403 (500-1½)	
LNAV MDA		420-1	395 (400-1)	420-1¼ 395 (400-1¼)
<b>C</b> CIRCLING	480-1½ 455 (500-1½)	500-1½	475 (500-1½)	620-2 595 (600-2)

