

GIFFA ONE DEPARTURE

AL-6453 (FAA)

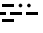
TEXAS GULF COAST RGNL (LBX)
ANGLETON/LAKE JACKSON, TEXAS

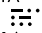
ASOS
119.925
CLNC DEL
125.2
CTAF
123.0
HOUSTON DEP CON
134.45 284.0

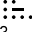
**TOP ALTITUDE:
ASSIGNED BY ATC**

NOTE: RADAR required.
NOTE: For aircraft destined for the DFW terminal area only.

CEDAR CREEK
114.8 CQY 
Chan 95

LEONA
110.8 LOA 
Chan 45

DAISETTA
116.9 DAS 
Chan 116

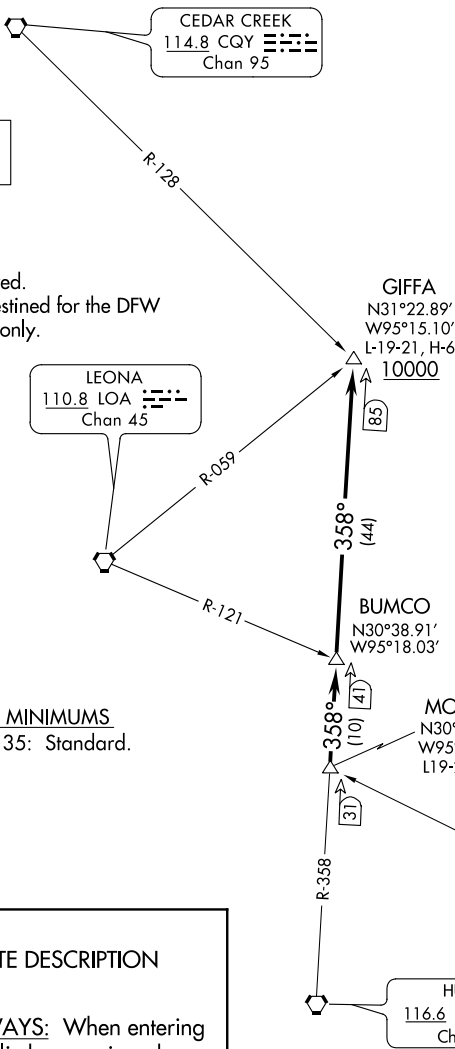
HUMBLE
116.6 IAH 
Chan 113

TAKEOFF MINIMUMS
Rwys 17, 35: Standard.

DEPARTURE ROUTE DESCRIPTION

TAKEOFF ALL RUNWAYS: When entering controlled airspace, climb on assigned heading for RADAR vectors to MONNT INT. Maintain ATC assigned altitude. Expect filed altitude 10 minutes after departure, thence. . . .

. . . . on IAH R-358 to cross GIFFA INT at or above 10000.



NOTE: Chart not to scale.

GIFFA ONE DEPARTURE

SC-5, 14 JUL 2022 to 11 AUG 2022

SC-5, 14 JUL 2022 to 11 AUG 2022