

WAAS CH 99531 W05A	APP CRS 048°	Rwy Idg TDZE Apt Elev	3643 1031 1031
--	------------------------	-----------------------------	---

RNAV (GPS) RWY 5

MONROE COUNTY (MNV)

RNP APCH.

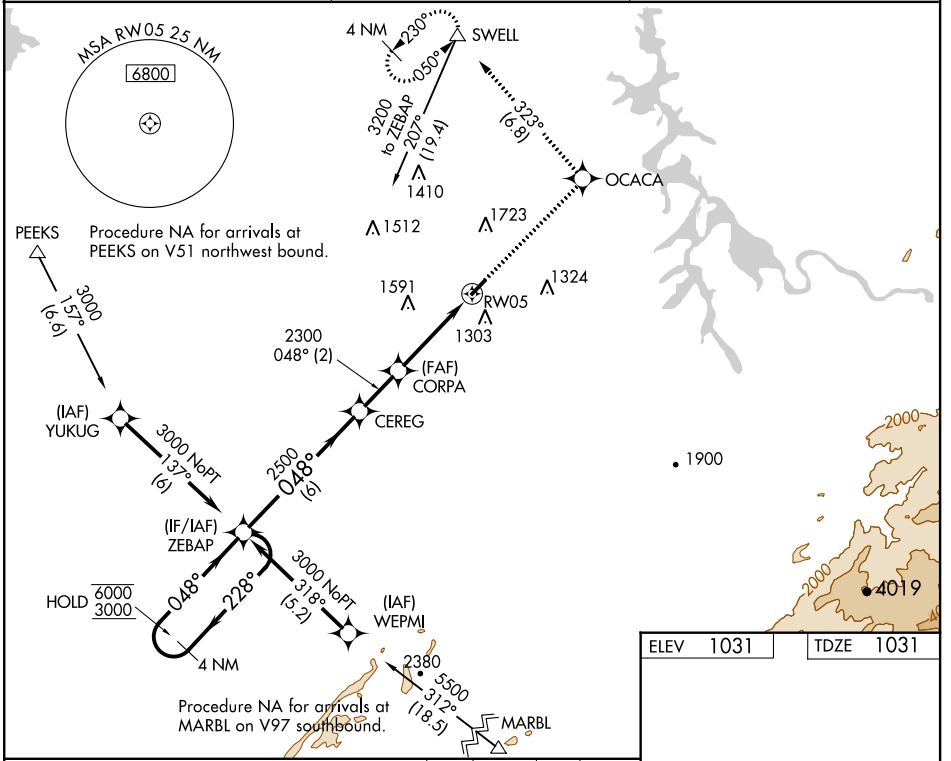
NA Circling NA NW of Rwy 5-23. Procedure NA at night. Rwy 5 helicopter visibility reduction below 1 SM NA. For uncompensated Baro-VNAV systems, LNAV/VNAV NA below -17°C or above 54°C.

MISSED APPROACH:
Climb to 3200 direct OCACA and track 323° to SWELL and hold.

AWOS-3
118.475

KNOXVILLE APP CON
123.9 353.6

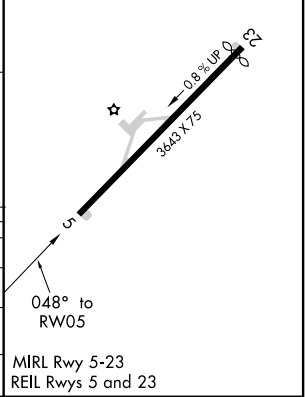
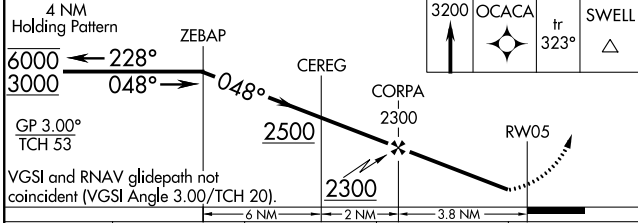
UNICOM
123.0 (CTAF)



SE-1, 14 JUL 2022 to 11 AUG 2022

SE-1, 14 JUL 2022 to 11 AUG 2022

ELEV 1031	TDZE 1031
-----------	-----------



CATEGORY	A	B	C	D
LPV DA	1395-1 $\frac{1}{8}$		364 (400-1 $\frac{1}{8}$)	NA
LNAV/VNAV DA	1538-1 $\frac{3}{4}$		507 (600-1 $\frac{3}{4}$)	NA
LNAV MDA	1680-1	649 (700-1)	1680-1 $\frac{7}{8}$ 649 (700-1 $\frac{7}{8}$)	NA
CIRCLING	1680-1	649 (700-1)	1680-2 649 (700-2)	NA