

| | | | |
|--|------------------------|-----------------------------|---|
| WAAS CH 72831 W23A | APP CRS 228° | Rwy Idg TDZE Apt Elev | 3503 1030 1031 |
|--|------------------------|-----------------------------|---|

RNAV (GPS) RWY 23

MONROE COUNTY (MNV)

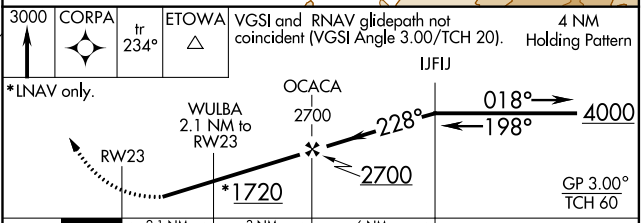
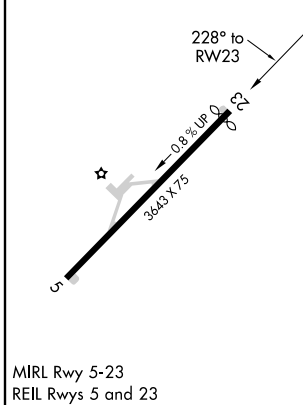
NA Baro-VNAV NA when using Mc Ghee Tyson altimeter setting. For uncompensated Baro-VNAV systems, LNAV/VNAV NA below -17°C (2°F) or above 54°C (130°F). Circling NA NW of Rwy 5-23. DME/DME RNP-0.3 NA. When local altimeter setting not received, use Mc Ghee Tyson altimeter setting and increase all DA 64 feet and all MDA 80 feet and increase LPV all Cats, LNAV/VNAV all Cats, LNAV Cat C, and Circling Cat C visibility ¼ mile. Helicopter visibility reduction below 1 SM not authorized. Procedure NA at night.

MISSED APPROACH: Climb to 3000 direct CORPA on track 234° to ETOWA and hold.

| | | |
|--------------------------|---|-------------------------------|
| AWOS-3 118.475 | KNOXVILLE APP CON 123.9 353.6 | UNICOM 123.0 (CTAF) |
|--------------------------|---|-------------------------------|



| | |
|-----------|-----------|
| ELEV 1031 | TDZE 1030 |
|-----------|-----------|



| CATEGORY | A | B | C | D |
|--------------|--------|-------------|-------------------------|----|
| LPV DA | | 1376-1½ | 346 (400-1½) | NA |
| LNAV/VNAV DA | | 1548-1¾ | 518 (600-1¾) | NA |
| LNAV MDA | 1480-1 | 450 (500-1) | 1480-1¾ 450 (500-1¾) | NA |
| CIRCLING | 1620-1 | 589 (600-1) | 1620-1½ 589 (600-1½) | NA |

SE-1, 14 JUL 2022 to 11 AUG 2022

SE-1, 14 JUL 2022 to 11 AUG 2022