

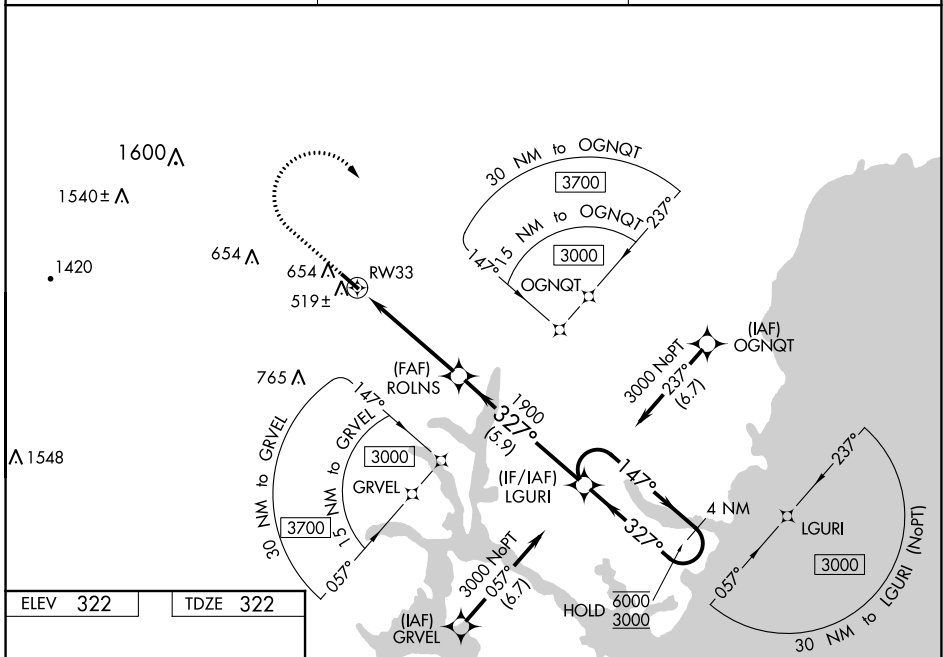
WAAS CH 72715 W33A	APP CRS 327°	Rwy Idg 4201 TDZE 322 Apt Elev 322
--	------------------------	---

RNAV (GPS) RWY 33

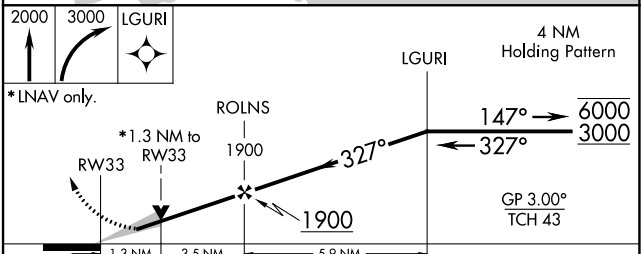
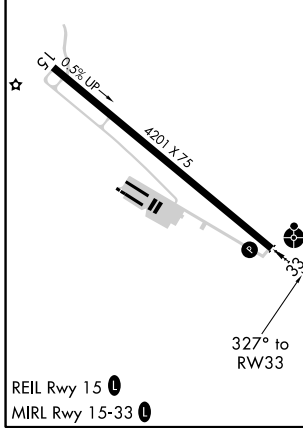
SKYHAVEN (DAW)

RNP APCH - GPS.	ODALS	MISSED APPROACH: Climb to 2000 then climbing right turn to 3000 direct LGURI and hold.
<p>▼ Inop table does not apply to LPV and LNAV/VNAV all Cats.</p> <p>▲ For uncompensated Baro-VNAV systems, LNAV/VNAV NA below -20°C or above 54°C.</p> <p>For inop ALS, increase LNAV visibility Cat A and B to 1 SM and Cat C to 1½ SM.</p>		

ASOS 135.275	BOSTON APP CON 125.05 269.4	UNICOM 122.7 (CTAF) 0
------------------------	---------------------------------------	---------------------------------



ELEV 322	TDZE 322
----------	----------



CATEGORY	A	B	C	D
LPV DA	572-¾ 250 (300-¾)			NA
LNAV/VNAV DA	689-1 367 (400-1)			NA
LNAV MDA	780-¾ 458 (500-¾)	780-1⅛ 458 (500-1⅛)		NA
CIRCLING	960-1 638 (700-1)	960-1¾ 638 (700-1¾)		NA

NE-1, 14 JUL 2022 to 11 AUG 2022

NE-1, 14 JUL 2022 to 11 AUG 2022