

APP CRS	Rwy Idg	<b>3395</b>
<b>092°</b>	TDZE	<b>617</b>
	Apt Elev	<b>620</b>

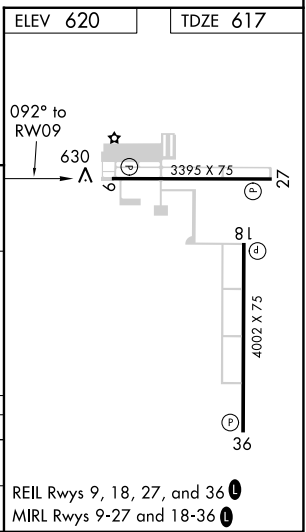
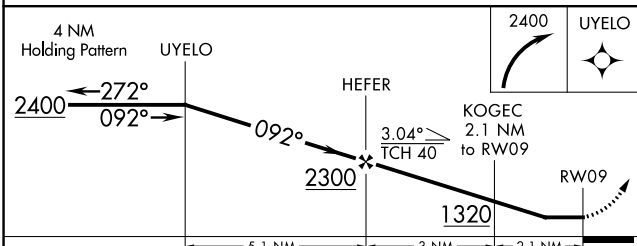
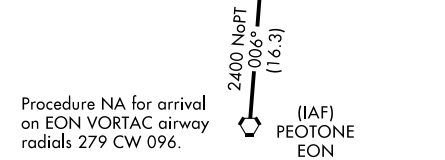
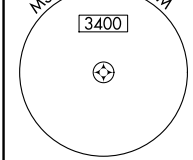
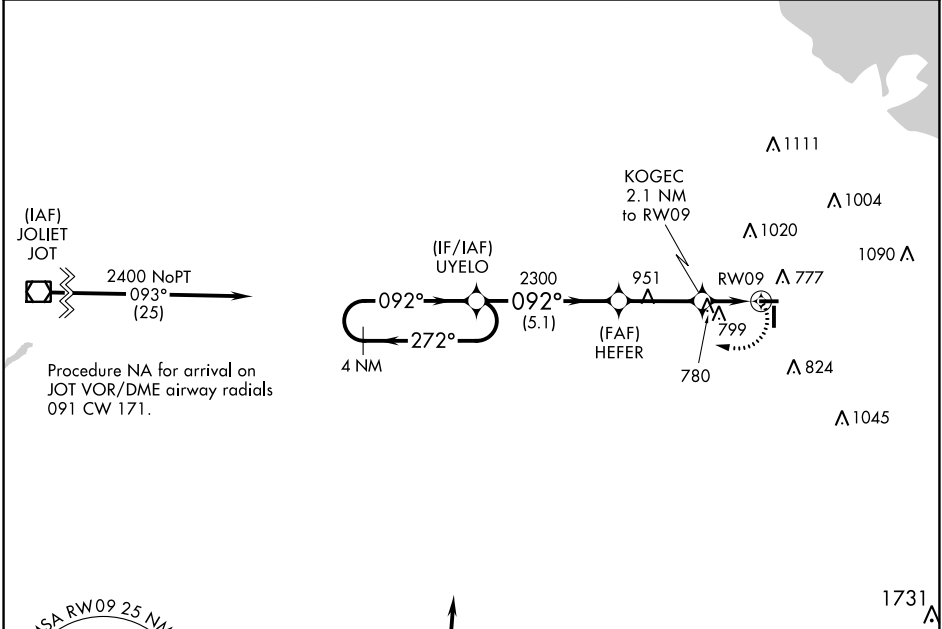
# RNAV (GPS) RWY 9

LANSING MUNI (IGQ)

**⚠** Rwy 9 Straight-in and Circling minimums NA at night.  
 Rwy 9 helicopter visibility reduction below 1 SM NA.  
 DME/DME RNP-0.3 NA.

MISSED APPROACH: Climbing right turn to 2400 direct UYELO and hold.

AWOS-3PT <b>119.275</b>	CHICAGO APP CON <b>128.2 285.6</b>	UNICOM <b>122.7 (CTAF) 0</b>
----------------------------	---------------------------------------	---------------------------------



CATEGORY	A	B	C	D
RNAV MDA	1080-1	463 (500-1)	NA	
CIRCLING	1140-1	520 (600-1)	NA	

EC-3, 14 JUL 2022 to 11 AUG 2022

EC-3, 14 JUL 2022 to 11 AUG 2022