

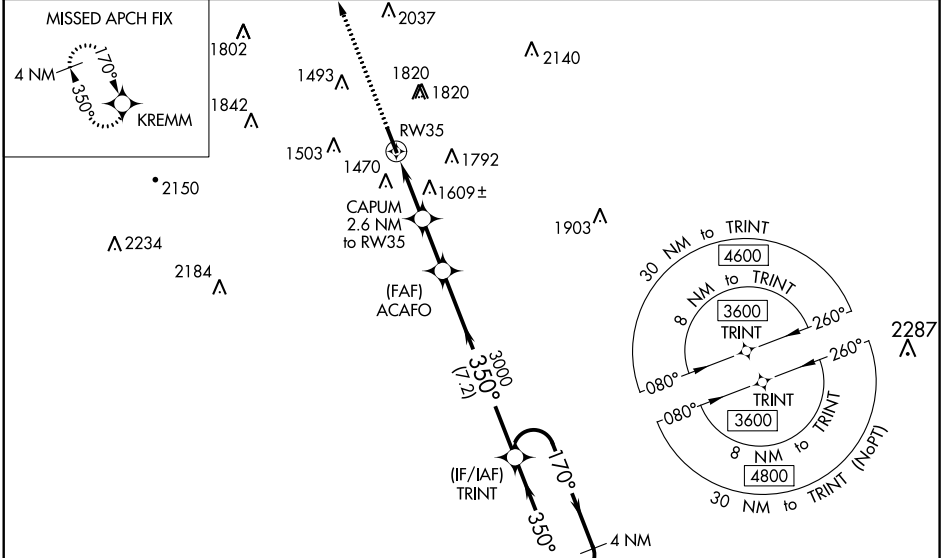
| | | |
|--|------------------------|---|
| WAAS CH 70518 W35A | APP CRS 350° | Rwy Idg TDZE 1135 Apt Elev 1137 |
|--|------------------------|---|

RNAV (GPS) RWY 35

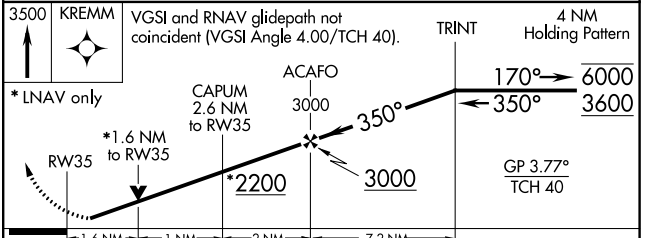
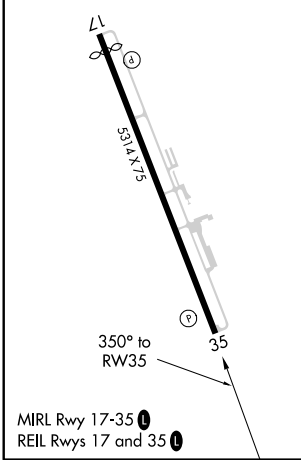
HAMILTON MUNI (VGC)

| | | |
|-----------|---|---|
| RNP APCH. | <p>Baro-VNAV and VDP NA when using Syracuse altimeter setting. Rwy 35 helicopter visibility reduction below 3/4 SM NA. For uncompensated Baro-VNAV systems, LNAV/VNAV NA below -17°C or above 50°C. When local altimeter setting not received, use Syracuse altimeter setting and increase LPV DA to 1748, LNAV/VNAV DA to 2164 and all MDA 180 feet; increase LPV visibility to 1 3/4 SM and LNAV Cat A/B visibility to 1 1/2 SM and Cat C visibility to 2 1/2 SM.</p> | MISSED APPROACH: Climb to 3500 direct KREMM and hold. |
|-----------|---|---|

| | | | |
|---------------------------|--|-------------------------------|--------------|
| AWOS-3P 119.425 | SYRACUSE APP CON 126.125 269.125 | UNICOM 123.0 (CTAF) | 122.7 |
|---------------------------|--|-------------------------------|--------------|



| | | |
|------------------|--|------------------|
| ELEV 1137 | | TDZE 1135 |
|------------------|--|------------------|



| CATEGORY | A | B | C | D |
|--------------|--------------------------------|--------------------------------|-------------------------|----|
| LPV DA | 1581-1 3/8 446 (500-1 3/8) | | | NA |
| LNAV/VNAV DA | 1997-4 862 (900-4) | | | NA |
| LNAV MDA | 1860-1 | 725 (800-1) | 1860-2 725 (800-2) | NA |
| CIRCLING | 2040-1 1/4 903 (1000-1 1/4) | 2120-1 1/2 983 (1000-1 1/2) | 2340-3 1203 (1300-3) | NA |

NE-2, 14 JUL 2022 to 11 AUG 2022

NE-2, 14 JUL 2022 to 11 AUG 2022