

MMALT FIVE DEPARTURE (RNAV)

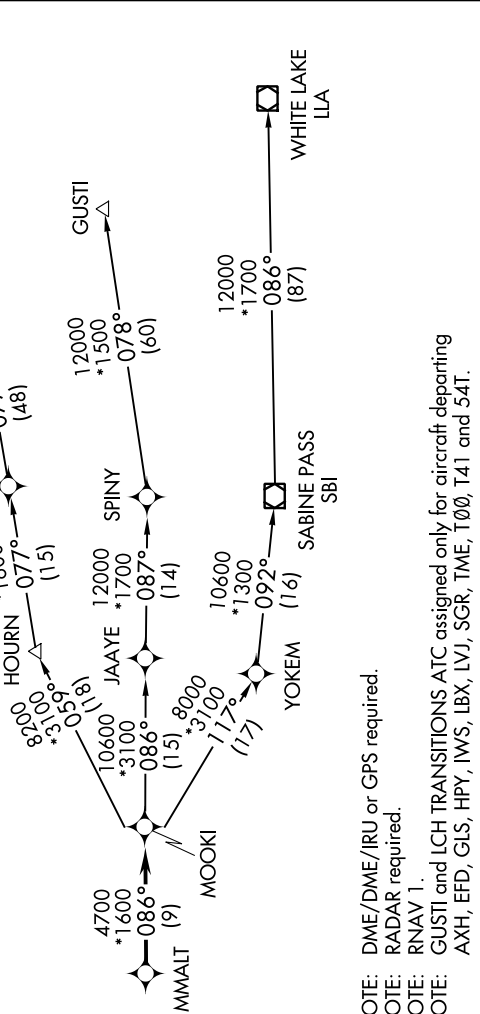
SC-5, 14 JUL 2022 to 11 AUG 2022

TAKEOFF MINIMUMS

Rwy 14, 32: Standard with minimum climb of 500' per NM to 540.

CTAF
122.8
HOUSTON DEP CON
134.45 284.0

TOP ALTITUDE: ASSIGNED BY ATC



- NOTE: DME/DME/IRU or GPS required.
- NOTE: RADAR required.
- NOTE: RNAV 1.
- NOTE: GUSTI and LCH TRANSITIONS ATC assigned only for aircraft departing AXH, EFD, GLS, HPY, IWS, LBX, LVJ, SGR, TME, T00, T41 and 54T.

DEPARTURE ROUTE DESCRIPTION

TAKEOFF Rwy 14: Climb on heading 140° to 540 for RADAR vectors to MMALT, thence. . . .

TAKEOFF Rwy 32: Climb on heading 320° to 540 for RADAR vectors to MMALT, thence. . . .

. . . on track 086° to MOOKI, then on (transition). Maintain ATC assigned altitude. Expect filed altitude 10 minutes after departure.

- GUSTI TRANSITION (MMALT5.GUSTI)
- LAKE CHARLES TRANSITION (MMALT5.LCH)
- WHITE LAKE TRANSITION (MMALT5.LLA)

NOTE: Chart not to scale.

SC-5, 14 JUL 2022 to 11 AUG 2022