

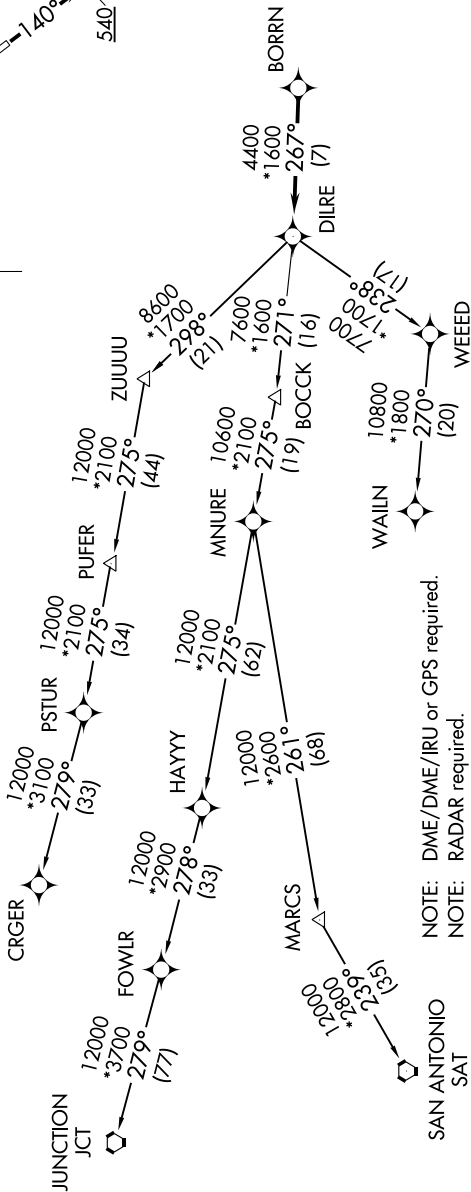
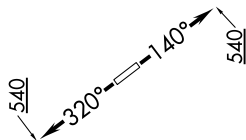
# BORRN FOUR DEPARTURE (RNAV)

**TOP ALTITUDE:  
ASSIGNED BY ATC**

SC-5, 14 JUL 2022 to 11 AUG 2022

CTAF  
122.8  
HOUSTON DEP CON  
134.45 284.0

TAKEOFF MINIMUMS:  
Rwy 14, 32: Standard with minimum  
climb of 500' per NM to 540.



NOTE: DME/DME/IRU or GPS required.  
 NOTE: RADAR required.  
 NOTE: RNAV 1.  
 NOTE: CRGR TRANSITION ATC assigned only  
 for aircraft departing 54T, AXH, EFD, GLS,  
 HPY, IWS, LBX, LVJ, SGR, TME, T00, T41.

(NARRATIVE ON FOLLOWING PAGE)

NOTE: Chart not to scale.

SC-5, 14 JUL 2022 to 11 AUG 2022

# BORRN FOUR DEPARTURE (RNAV)