

WESTMINSTER, MARYLAND

AL-5533 (FAA)

21140

WAAS CH 82117 W34A	APP CRS 339°	Rwy Idg 5100 TDZE 788 Apt Elev 789
----------------------------------------	------------------------	---------------------------------------------------------------

RNAV (GPS) RWY 34

CARROLL COUNTY RGNL/JACK B POAGE FLD (DMW)

RNP APCH

▼ For uncompensated Baro-VNAV systems, LNAV/VNAV NA below -16°C (4°F) or above 54°C (130°F).

▲

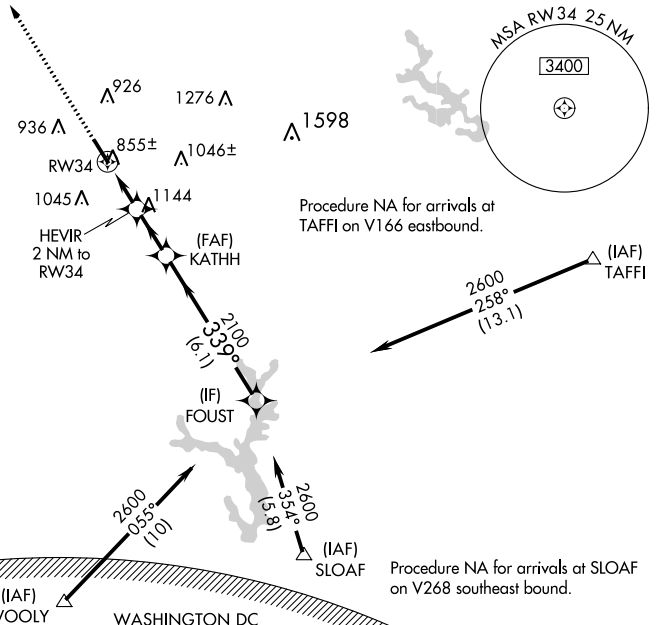
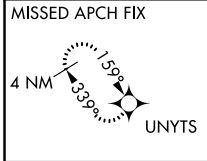
MISSED APPROACH: Climb to 3000 direct UNYTS and hold

AWOS-3
121.25

POTOMAC APP CON
125.525 291.625

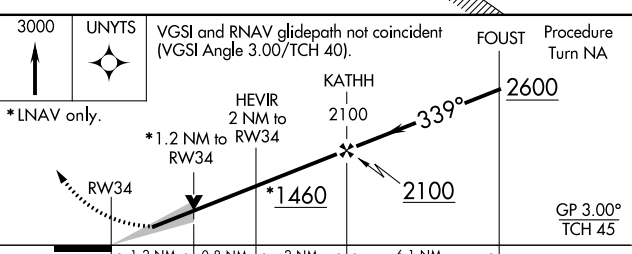
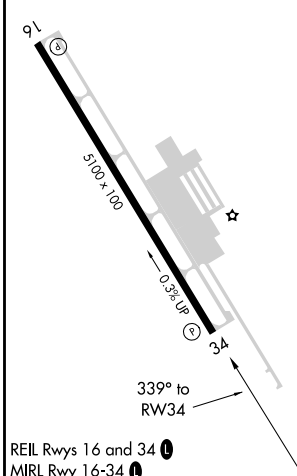
GCO
121.725

UNICOM
122.7 (CTAF) 0



ELEV 789	TDZE 788
----------	----------

WASHINGTON DC METROPOLITAN SFRA
WARNING -- WASHINGTON DC SFRA.
CTC POTOMAC APP CON



CATEGORY	A	B	C	D
LPV DA	988-1 200 (200-1)			NA
LNAV/VNAV DA	1105-1½ 317 (400-1½)			NA
LNAV MDA	1180-1 392 (400-1)			NA
CIRCLING	1320-1 531 (600-1)	1400-1 611 (700-1)	1500-2 711 (800-2)	NA

WESTMINSTER, MARYLAND
Amdt 1C 20MAY21

CARROLL COUNTY RGNL/JACK B POAGE FLD (DMW)
39°36'N-77°00'W

RNAV (GPS) RWY 34

NE-3, 14 JUL 2022 to 11 AUG 2022

NE-3, 14 JUL 2022 to 11 AUG 2022