

WAAS CH 65607 W16A	APP CRS 159°	Rwy Idg TDZE 789 Apt Elev 789	5100
--	------------------------	---	-------------

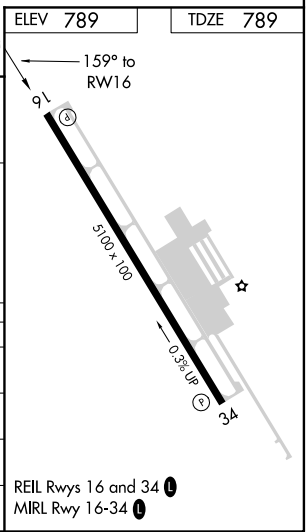
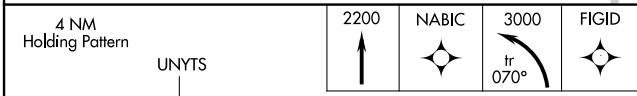
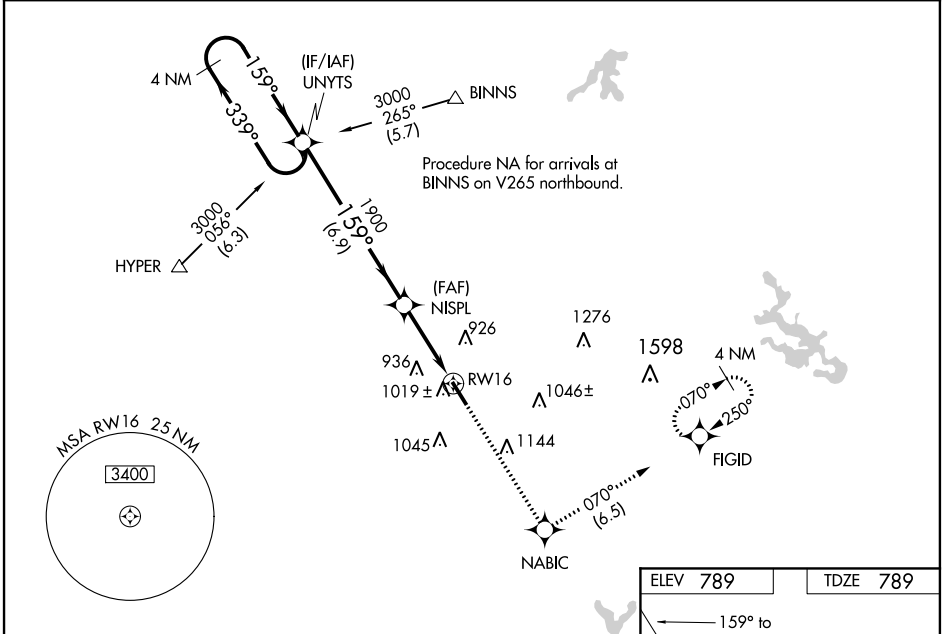
RNAV (GPS) RWY 16

CARROLL COUNTY RGNL/JACK B POAGE FLD (DMW)

Baro-VNAV NA when using Frederick altimeter setting. For uncompensated Baro-VNAV systems, LNAV/VNAV NA below -16°C (4°F) or above 54°C (130°F). When local altimeter setting not received, use Frederick altimeter setting and increase LPV DA to 1199 feet, LNAV/VNAV DA to 1307 feet, and all MDAs 120 feet; increase LPV all Cats visibility 1/8 SM, LNAV Cat C visibility 3/8 SM, and Circling Cat C visibility 1/2 SM. When VGSi inop, Straight-in/Circling Rwy 16 procedure NA at night. DME/DME RNP-0.3 NA. Visibility reduction by helicopters NA.

MISSED APPROACH:
Climb to 2200 direct NABIC then climbing left turn to 3000 on track 070° to FIGID and hold.

AWOS-3 121.25	POTOMAC APP CON 125.525 291.625	GCO 121.725	UNICOM 122.7 (CTAF) 0
-------------------------	---	-----------------------	---------------------------------



CATEGORY	A	B	C	D
LPV DA	1081-1 292 (300-1)			NA
LNAV/ VNAV DA	1189-1 3/8 400 (400-1 3/8)			NA
LNAV MDA	1280-1	491 (500-1)	1280-1 3/8 491 (500-1 3/8)	NA
CIRCLING	1320-1 531 (600-1)	1400-1 611 (700-1)	1500-2 711 (800-2)	NA

NE-3, 14 JUL 2022 to 11 AUG 2022

NE-3, 14 JUL 2022 to 11 AUG 2022