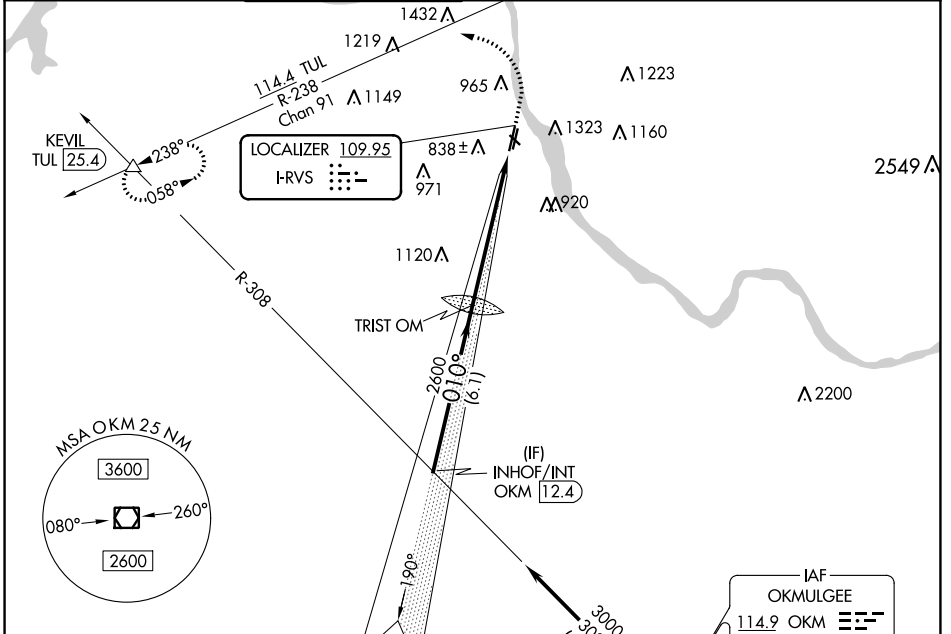


LOC I-RVS	APP CRS	Rwy Idg TDZE	5102
109.95	010°	Apt Elev	626
			638

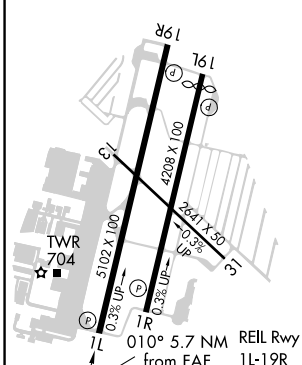
ILS or LOC RWY 1L

TULSA RIVERSIDE (RVS)

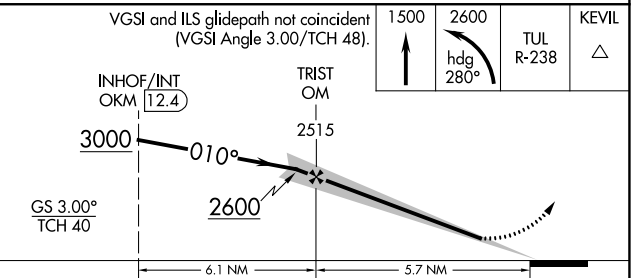
<p>Circling NA northeast of Rwsy 31 and 19L.</p>		<p>MISSED APPROACH: Climb to 1500 then climbing left turn to 2600 on heading 280° and TUL VORTAC R-238 to KEVIL INT/TUL 25.4 DME and hold.</p>				
ATIS	TULSA APP CON	RIVERSIDE TOWER *	GND CON	CLNC DEL	CLNC DEL	UNICOM
126.5	134.7	120.3 (CTAF) 0	121.7	124.5	121.7 (When twr closed)	122.95



ELEV	638	D	TDZE	626
------	------------	----------	------	------------



Procedure NA for arrival on OKM VOR/DME airway radials 308 CW 359.



CATEGORY	A	B	C	D
S-ILS 1L	826-3/4 200 (200-3/4)			
S-LOC 1L	1220-1	594 (600-1)	1220-1 3/4	594 (600-1 3/4)
CIRCLING	1260-1 622 (700-1)	1280-1 642 (700-1)	1280-1 3/4 642 (700-1 3/4)	1360-2 1/4 722 (800-2 1/4)

FAF to MAP 5.7 NM					
Knots	60	90	120	150	180
Min:Sec	5:42	3:48	2:51	2:17	1:54

TULSA, OKLAHOMA
Amdt 3 28FEB19

36°02'N-95°59'W

TULSA RIVERSIDE (RVS)

ILS or LOC RWY 1L

SC-1, 14 JUL 2022 to 11 AUG 2022

SC-1, 14 JUL 2022 to 11 AUG 2022