

DORRL ONE DEPARTURE (RNAV)

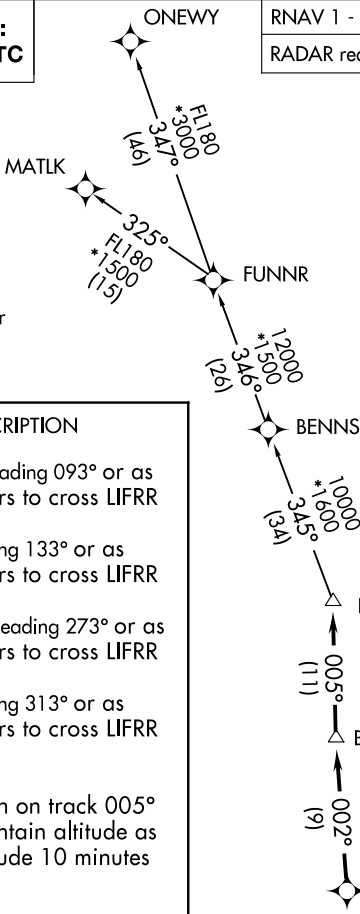
ATIS
124.0
CLNC DEL
133.0
GND CON
121.7
TAMiami TOWER *
118.9 (CTAF)
MIAMI DEP CON
125.5 354.1

**TOP ALTITUDE:
ASSIGNED BY ATC**

RNAV 1 - DME/DME/IRU or GPS.

RADAR required.

NOTE: For turbo-props/props filed at or above 13000.



DEPARTURE ROUTE DESCRIPTION

TAKEOFF RUNWAYS 9L/R: Climb on heading 093° or as assigned by ATC for RADAR vectors to cross LIFRR at 4000, thence. . . .

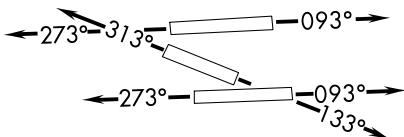
TAKEOFF RUNWAY 13: Climb on heading 133° or as assigned by ATC for RADAR vectors to cross LIFRR at 4000, thence. . . .

TAKEOFF RUNWAYS 27L/R: Climb on heading 273° or as assigned by ATC for RADAR vectors to cross LIFRR at 4000, thence. . . .

TAKEOFF RUNWAY 31: Climb on heading 313° or as assigned by ATC for RADAR vectors to cross LIFRR at 4000, thence. . . .

. . . . on track 002° to BOGY, then on track 005° to DORRL then on (transition), maintain altitude as assigned by ATC, expect filed altitude 10 minutes after departure.

MATLK TRANSITION (DORRL.MATLK)
ONEWY TRANSITION (DORRL.ONEWY)



TAKEOFF MINIMUMS

- Rwy 9L: Standard with minimum climb of 500' per NM to 1300.
- Rwy 9R: Standard with minimum climb of 500' per NM to 1500.
- Rwy 13: Standard with minimum climb of 500' per NM to 1800.
- Rwy 27L: Standard with minimum climb of 500' per NM to 1900.
- Rwy 27R: Standard with minimum climb of 500' per NM to 1700.
- Rwy 31: Standard with minimum climb of 500' per NM to 1400.

NOTE: Chart not to scale.

DORRL ONE DEPARTURE (RNAV)