

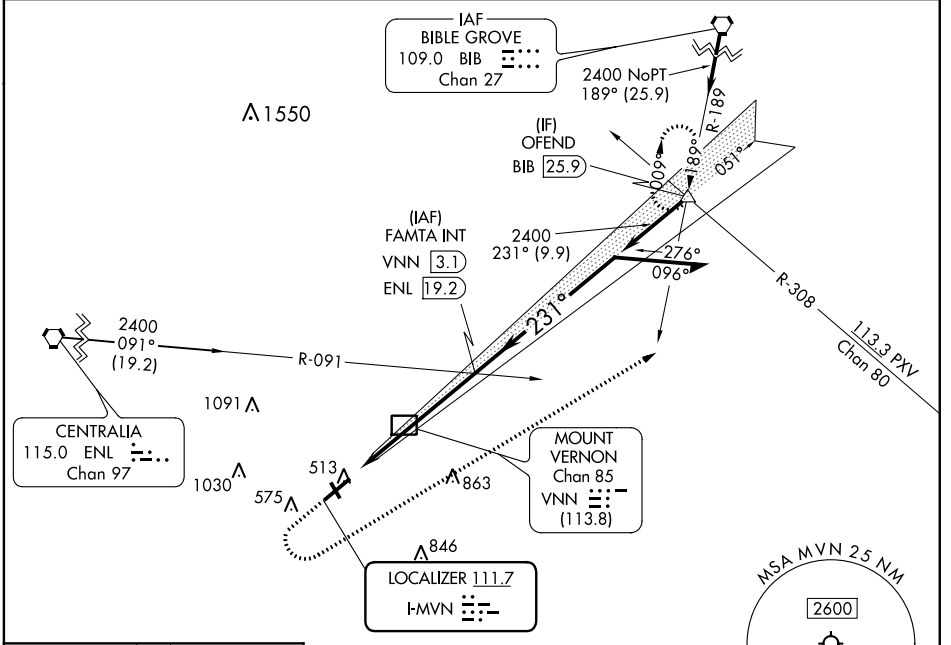
LOC I-MVN 111.7	APP CRS 231°	Rwy Idg TDZE Apt Elev	5572 471 480
---------------------------	------------------------	-----------------------------	---

ILS or LOC RWY 23

MOUNT VERNON (MVN)

<p>Circling Rwy 15, 33 NA at night.</p>	<p>MALSR</p>	<p>MISSED APPROACH: Climb to 2300 then climbing left turn to 2400 on heading 060° and on BIB VORTAC R-189 to OFEND and hold.</p>
---	--------------	--

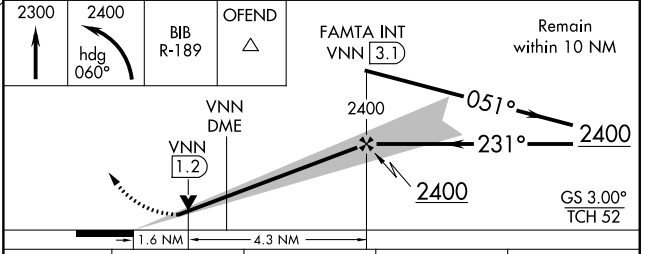
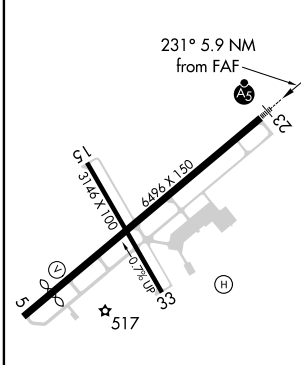
AWOS-3PT 118.2	KANSAS CITY CENTER 127.7 351.825	UNICOM 123.0 (CTAF) 0
--------------------------	--	---------------------------------



EC-3, 14 JUL 2022 to 11 AUG 2022

EC-3, 14 JUL 2022 to 11 AUG 2022

ELEV 480	D	TDZE 471
----------	----------	----------



HIRL Rwy 5-23 0	MIRL Rwy 15-33 0
FAF to MAP 5.9 NM	
Knots	60 90 120 150 180
Min:Sec	5:54 3:56 2:57 2:22 1:58

CATEGORY	A	B	C	D
S-ILS 23	671-1/2 200 (200-1/2)			
S-LOC 23	1020-1/2 549 (600-1/2)	1020-1 549 (600-1 1/2)		
C CIRCLING	1020-1 540 (600-1)	1140-1 3/4 660 (700-1 3/4)	1380-3 900 (1000-3)	