

WAAS CH 97639 W17A	APP CRS 170°	Rwy Idg 4372 TDZE 456 Apt Elev 464
--	------------------------	---

RNAV (GPS) RWY 17

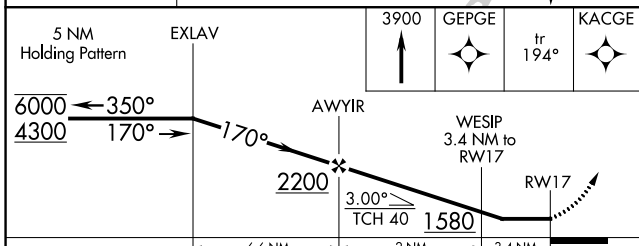
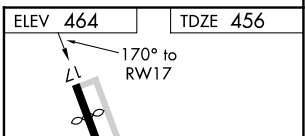
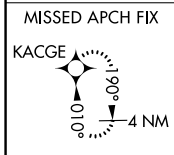
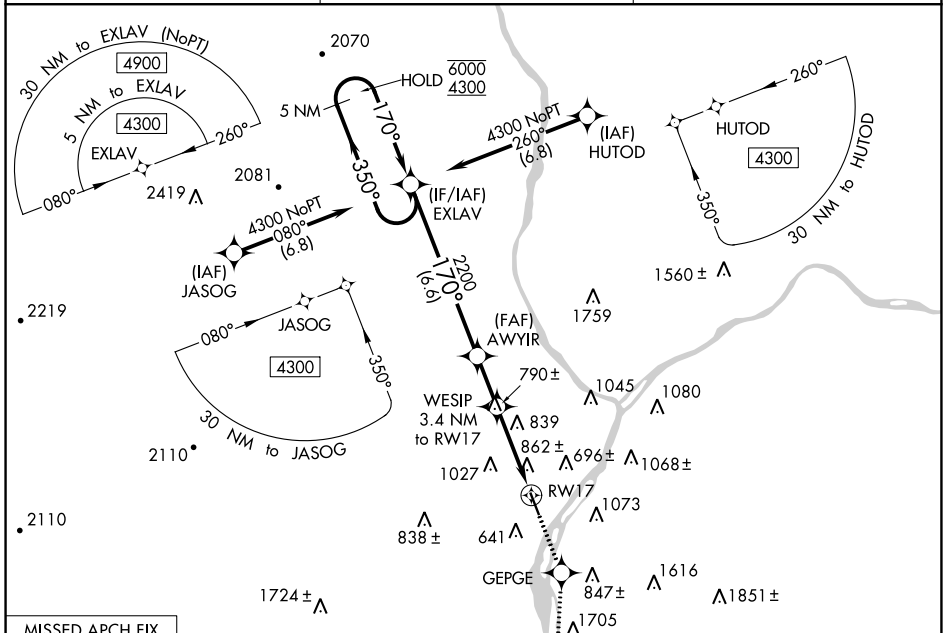
PENN VALLEY (SE/G)

RNP APCH

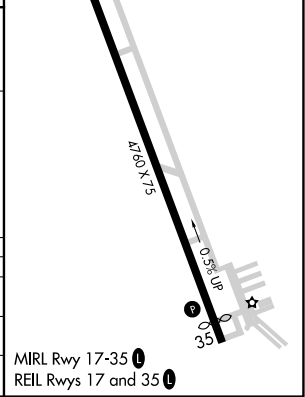
▼ Rwy 17 helicopter visibility reduction below 1 SM NA. Straight-in Rwy 17
▲ NA at night, Circling Rwy 17 NA at night. When Circling to Rwy 35 at night,
☉ -15°C operational VGSI required, remain on or above VGSI glidepath until threshold.

MISSED APPROACH: Climb to 3900 direct GEPGE and on track 194° to KACGE and hold, continue climb-in-hold to 3900.

ASOS 123.975	HARRISBURG APP CON 118.25 269.45	UNICOM 122.7 (CTAF) ☉
------------------------	--	---------------------------------



CATEGORY	A	B	C	D
LP MDA	1200-1 744 (800-1)	1200-1¼ 744 (800-1¼)	1200-2	744 (800-2)
RNAV MDA	1260-1 804 (800-1)	1260-1¼ 804 (800-1¼)	1260-2½	804 (800-2½)
☉ CIRCLING	1400-1¼	936 (1000-1¼)	1420-3 956 (1000-3)	1600-3 1136 (1200-3)



NE-4, 14 JUL 2022 to 11 AUG 2022

NE-4, 14 JUL 2022 to 11 AUG 2022