

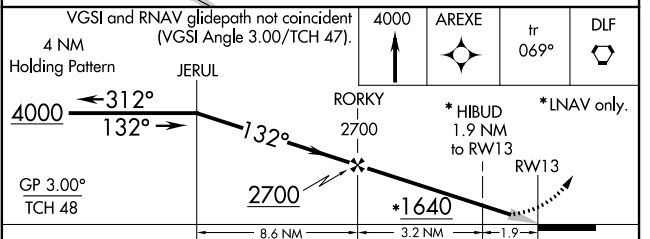
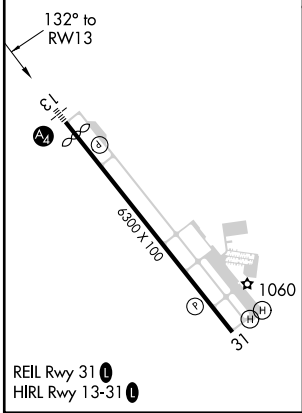
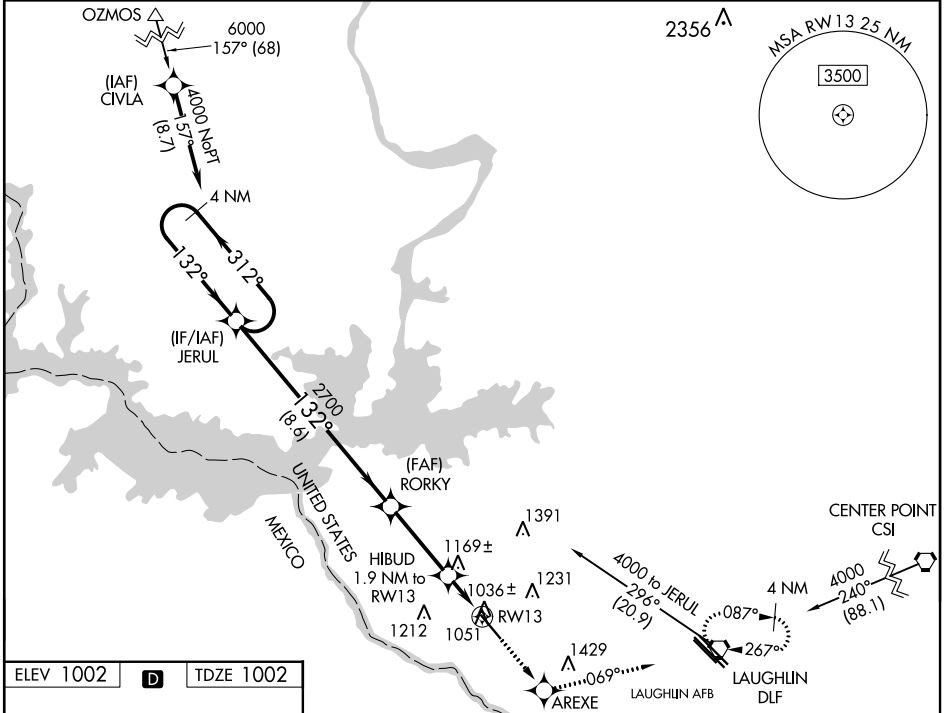
WAAS CH <b>86499</b>	APP CRS <b>132°</b>	Rwy Idg TDZE <b>1002</b>	<b>6000</b>
<b>W13A</b>		Apt Elev <b>1002</b>	

# RNAV (GPS) RWY 13

DEL RIO INTL (DRT)

RNP APCH.	MALS	MISSED APPROACH: Climb to 4000 direct AREXE and on 069° track to DLF VORTAC and hold, continue climb-in-hold to 4000.
<p>⚠ Circling NA for Cat D southwest of Rwy 13-31. When local altimeter setting not received, use Laughlin AFB altimeter setting and increase all DA 30 feet and all MDA 40 feet, increase LPV visibility all Cats, LNAV Cats C and D and Circling Cats C and D visibility ¼ SM. Baro-VNAV NA when using Laughlin AFB altimeter setting. For uncompensated Baro-VNAV systems, LNAV/VNAV NA below -17° C (2°F) or above 47° C (116°F).</p>		

ASOS <b>118.525</b>	DEL RIO APP CON * <b>119.6 259.1</b>	CLNC DEL <b>120.5</b>	UNICOM <b>122.8 (CTAF)</b>
------------------------	---	--------------------------	-------------------------------



CATEGORY	A	B	C	D
LPV DA		1252-¾	250 (300-¾)	
LNAV/VNAV DA		1401-1	399 (400-1)	
LNAV MDA	1500-½	498 (500-½)	1500-¾ 498 (500-¾)	1500-1 498 (500-1)
CIRCLING	1500-1 498 (500-1)	1560-1 558 (600-1)	1740-2 738 (800-2)	1740-2½ 738 (800-2½)

SC-3, 14 JUL 2022 to 11 AUG 2022

SC-3, 14 JUL 2022 to 11 AUG 2022