

WAAS CH 40208 W35A	APP CRS 355°	Rwy Idg TDZE 163 Apt Elev 214
--	------------------------	---

RNAV (GPS) RWY 35

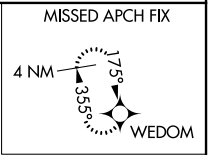
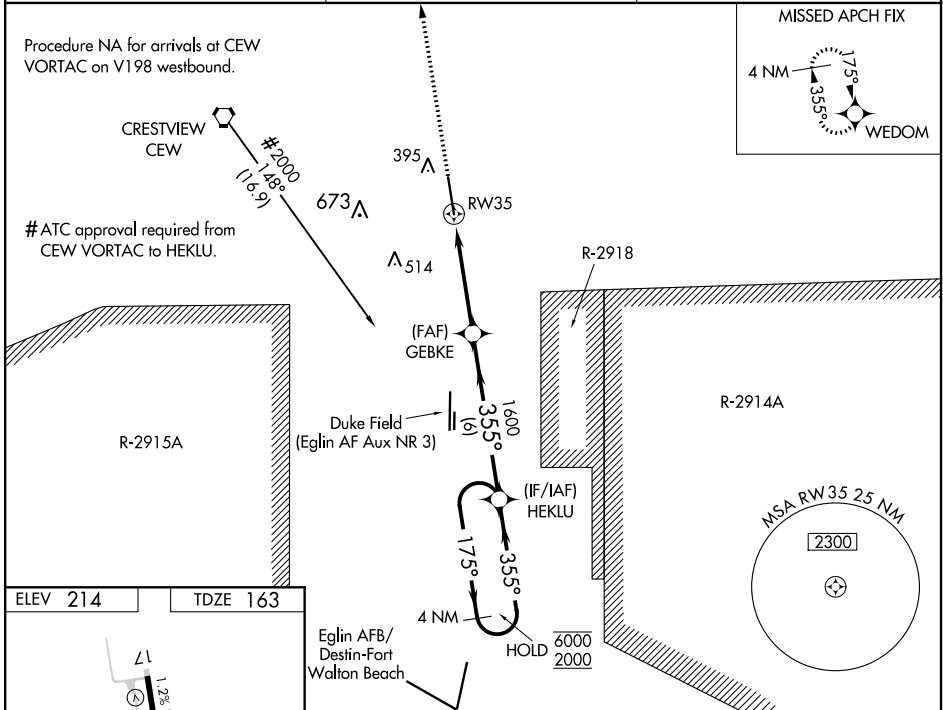
BOB SIKES (CEW)

RNP APCH.

Baro-VNAV and VDP NA when using Eglin AFB altimeter setting. Rwy 35 helicopter visibility reduction below $\frac{3}{4}$ SM NA. For uncompensated Baro-VNAV systems, LNAV/VNAV NA below -5°C or above 54°C. When local altimeter setting not received, use Eglin AFB altimeter setting and increase LPV DA to 509, LNAV/VNAV DA to 550, and all MDA 60 feet, increase LNAV Cat C/D visibility $\frac{1}{2}$ SM.

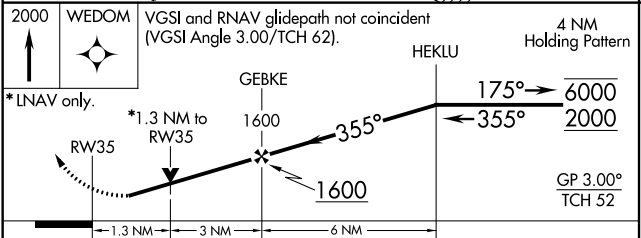
MISSED APPROACH: Climb to 2000 direct WEDOM and hold.

ASOS 119.275	EGLIN APP CON 124.05 284.65	UNICOM 122.95 (CTAF) 0
------------------------	---------------------------------------	----------------------------------



ELEV 214	TDZE 163
----------	----------

HIRL Rwy 17-35



CATEGORY	A	B	C	D
LPV DA		450-1	287 (300-1)	
LNAV/VNAV DA		491-1 $\frac{1}{4}$	328 (300-1 $\frac{1}{4}$)	
LNAV MDA	640-1	477 (500-1)	640-1 $\frac{3}{8}$	477 (500-1 $\frac{3}{8}$)

SE-3, 14 JUL 2022 to 11 AUG 2022

SE-3, 14 JUL 2022 to 11 AUG 2022