

WAAS CH <b>56206</b> <b>W17A</b>	APP CRS <b>175°</b>	Rwy Idg <b>8006</b> TDZE <b>213</b> Apt Elev <b>214</b>
--	------------------------	---

# RNAV (GPS) RWY 17

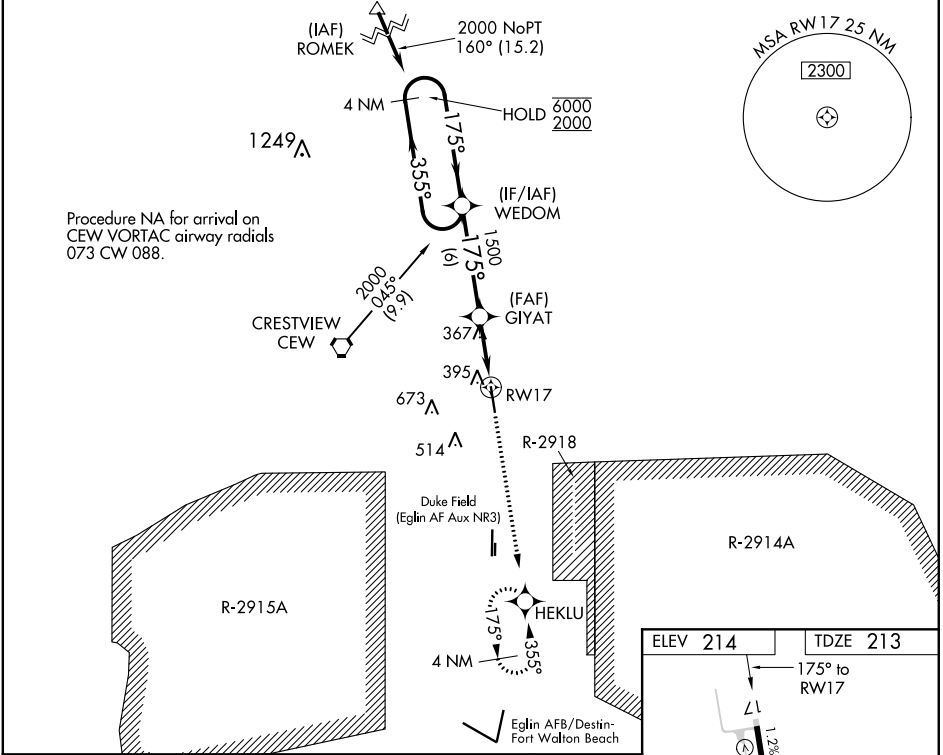
BOB SIKES (CEW)

RNP APCH.

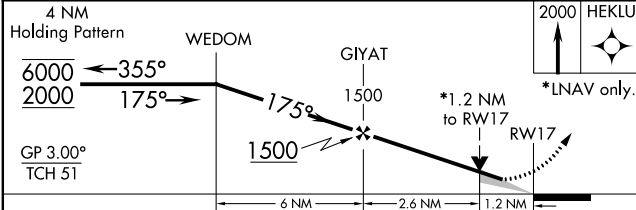
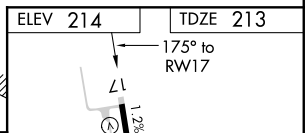
**⚠** Circling NA for Cat D west of Rwy 17-35. Baro-VNAV and VDP NA when using EGLIN AFB altimeter setting. When local altimeter setting not received, use Egin AFB altimeter setting and increase LPV DA to 529, LNAV/VNAV DA to 699 and all MDA 60 feet. For uncompensated Baro-VNAV systems, LNAV/VNAV NA below -5°C or above 54°C.

MISSED APPROACH: Climb to 2000 direct HEKLU and hold.

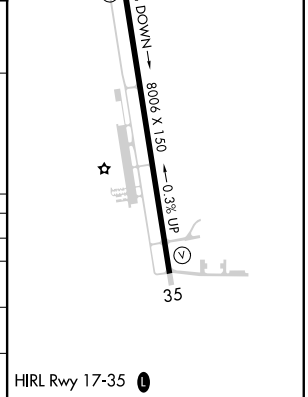
ASOS <b>119.275</b>	EGLIN APP CON <b>124.05 284.65</b>	UNICOM <b>122.95 (CTAF) 0</b>
------------------------	---------------------------------------	----------------------------------



Procedure NA for arrival on CEW VORTAC airway radials 073 CW 088.



CATEGORY	A	B	C	D
LPV DA	470-1 257 (300-1)			
LNAV/VNAV DA	640-1½ 427 (500-1½)			
LNAV MDA	660-1 447 (500-1)	660-1¼ 447 (500-1¼)	660-1½ 447 (500-1½)	660-1½ 447 (500-1½)
<b>C</b> CIRCLING	700-1 486 (500-1)	820-1¾ 606 (700-1¾)	840-2 626 (700-2)	



SE-3, 14 JUL 2022 to 11 AUG 2022

SE-3, 14 JUL 2022 to 11 AUG 2022