

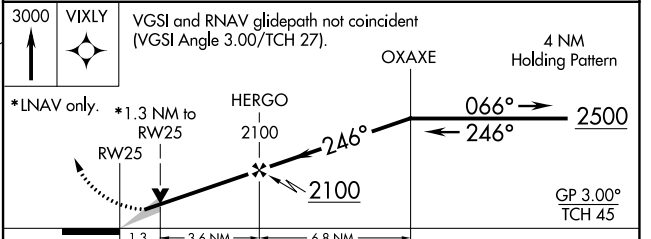
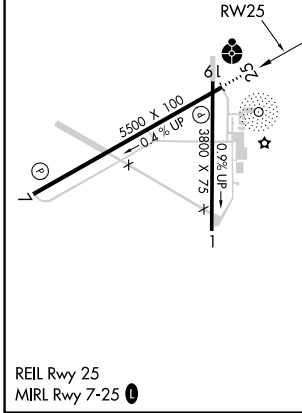
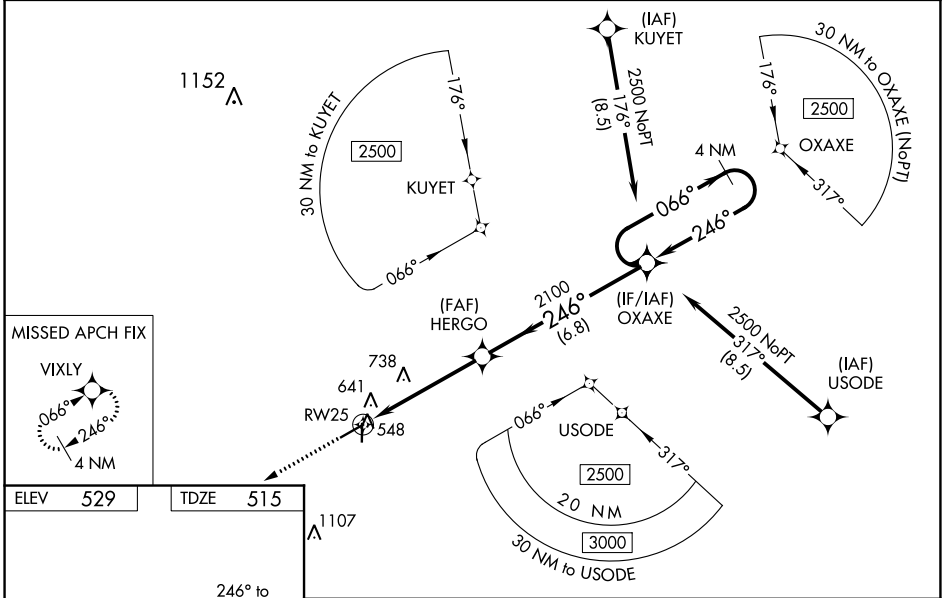
WAAS CH <b>50301</b> <b>W25A</b>	APP CRS <b>246°</b>	Rwy Idg TDZE Apt Elev	<b>5500</b> <b>515</b> <b>529</b>
--	------------------------	-----------------------------	---

# RNAV (GPS) RWY 25

AIKEN RGNL (AIK)

RNP APCH.	<p>ODALS</p>	<p>MISSED APPROACH: Climb to 3000 direct VIXLY and hold.</p>
<p><b>▽</b> Baro-VNAV NA when using Augusta Rgnl at Bush Fld altimeter setting.  <b>△ NA</b> For uncompensated Baro-VNAV systems, LNAV/VNAV NA below -16°C or above 40°C. VDP NA with Augusta Rgnl at Bush Fld altimeter setting. When local altimeter setting not received, use Augusta Rgnl at Bush Fld altimeter setting: increase LPV all Cats DA to 869 feet, LNAV/VNAV all Cats DA to 927 feet and all visibilities ¾ mile; increase all MDA 120 feet and Cat C/D visibilities ¼ mile. For inop ODALS, increase LPV all Cats visibility to ¾ mile, LNAV/VNAV all Cats to 1 ½ mile and LNAV Cat C/D to 1 ¼ mile. For inop ODALS when using Augusta Rgnl at Bush Fld altimeter setting, increase LPV all Cats visibility to 1 ¼ mile, LNAV/VNAV all Cats to 1 ½ mile and LNAV Cat D to 1 ¾ mile.</p>		

AWOS-3 <b>118.025</b>	AUGUSTA APP CON * <b>119.15 284.625</b>	CLNC DEL <b>126.075</b>	UNICOM <b>122.8 (CTAF)</b>
--------------------------	--	----------------------------	-------------------------------



CATEGORY	A	B	C	D
LPV DA	765-¾ 250 (300-¾)			
LNAV/VNAV DA	823-1 308 (300-1)			
LNAV MDA	940-¾ 425 (500-¾)		940-1/8 425 (500-1/8)	

SE-2, 14 JUL 2022 to 11 AUG 2022

SE-2, 14 JUL 2022 to 11 AUG 2022