

LOC/DME I-AIK 109.9 Chan 36	APP CRS 066°	Rwy Idg 5500 TDZE 515 Apt Elev 529
---	------------------------	---

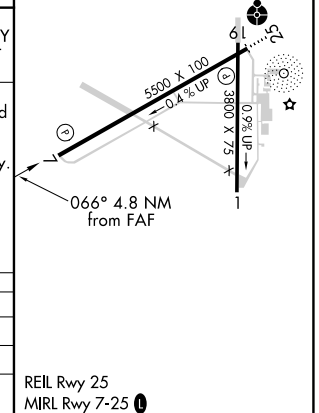
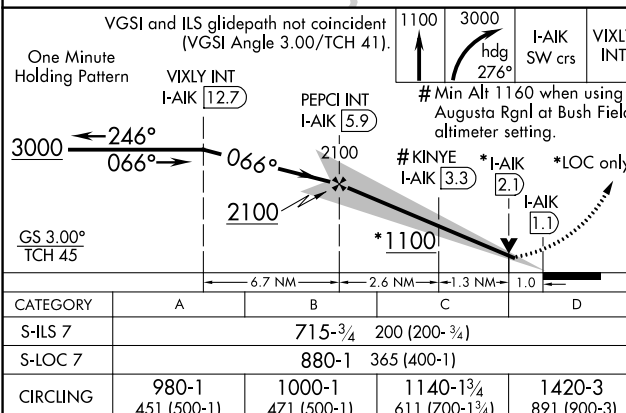
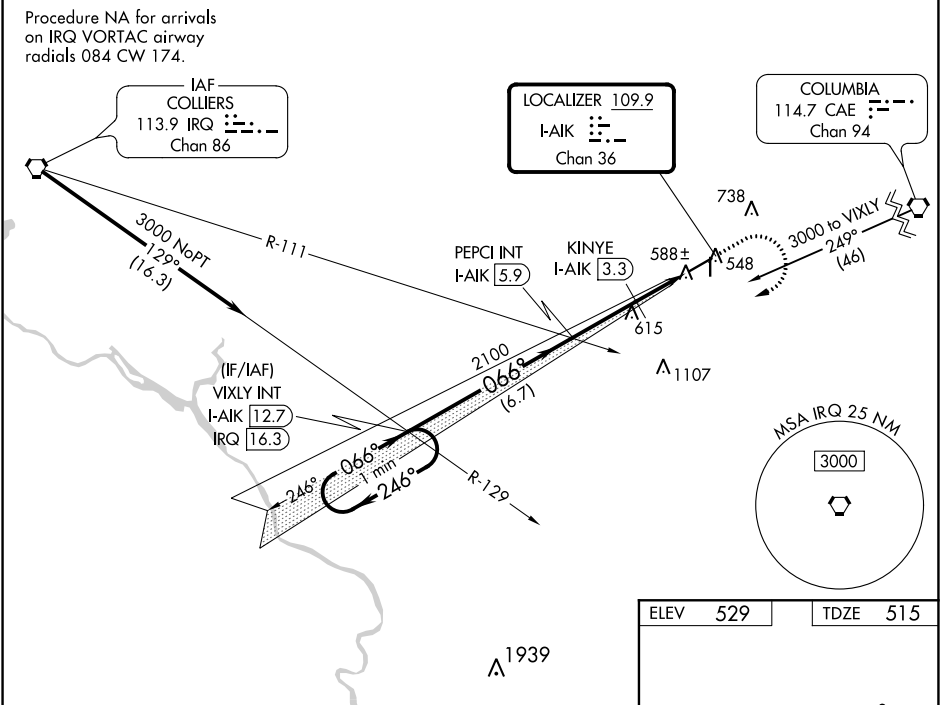
ILS or LOC/DME RWY 7

AIKEN RGNL (AIK)

V VDP NA with Augusta Rgnl at Bush Fld altimeter setting.
NA When local altimeter setting not received, use Augusta Rgnl at Bush Fld altimeter setting: increase S-ILS 7 all Cats DAs to 819 feet and all Cats visibility ¼ SM; increase all MDAs 120 feet and S-LOC 7 Cats C/D visibility ¾ SM and Circling Cat C visibility ¼ SM.

MISSED APPROACH: Climb to 1100 then climbing right turn to 3000 on heading 276° and I-AIK SW course (246°) to VIXLY INT/I-AIK 12.7 DME and hold.

AWOS-3 118.025	AUGUSTA APP CON * 119.15 284.625	CLNC DEL 126.075	UNICOM 122.8 (CTAF)
--------------------------	--	----------------------------	-------------------------------



SE-2, 14 JUL 2022 to 11 AUG 2022

SE-2, 14 JUL 2022 to 11 AUG 2022