

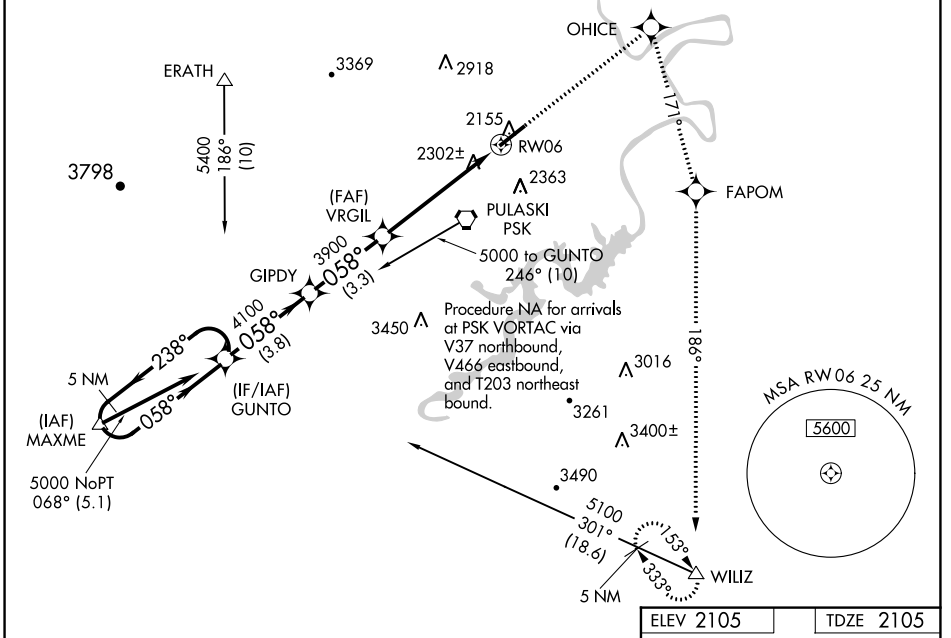
WAAS CH <b>87015</b> <b>W06A</b>	APP CRS <b>058°</b>	Rwy Idg TDZE Apt Elev	<b>6201</b> <b>2105</b> <b>2105</b>
--	------------------------	-----------------------------	---

# RNAV (GPS) RWY 6

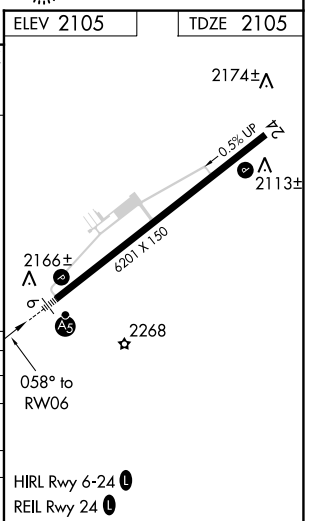
NEW RIVER VALLEY (PSK)

RNP APCH.		<p>For uncompensated Baro-VNAV systems, LNAV/VNAV NA below -19°C or above 44°C. When local altimeter setting not received, use Blacksburg altimeter setting and increase all DA 36 feet, and all MDA 40 feet. VDP and Baro-VNAV NA when using Blacksburg altimeter setting. Inop table does not apply to LPV all Cats and LNAV Cats A and B. For inop MALSR, increase LNAV Cat C visibility to 1/4 SM. Circling NA for Cat D northwest of Rwy 6-24.</p>	
AWOS-3 <b>127.375</b>	ROANOKE APP CON <b>126.0 339.8</b>	ROANOKE CLNC DEL <b>121.7</b>	UNICOM <b>122.7 (CTAF)</b>

MALSR  
 MISSED APPROACH: Climb to 6000 direct OHICE and right turn via track 171° to FAPOM and via track 186° to WILIZ and hold.



5 NM Holding Pattern		OHICE FAPOM WILIZ		
GUNTO 5000 $\leftarrow$ 238° $\rightarrow$ 058° GP 3.00° TCH 58		VGSI and RNAV glidepath not coincident (VGSI Angle 3.00/TCH 58). * LNAV only.		
GIPDY 4100 3.8 NM		VRGIL 3900 *1.3 NM to RW06 3.3 NM		
3900 4.1 NM		RW06 1.3 NM		
CATEGORY	A	B	C	D
LPV DA		2305-1	200 (200-1)	
LNAV/ VNAV DA		2597-1¼	492 (500-1¼)	
LNAV MDA		2560-1	455 (500-1)	
CIRCLING	2620-1 515 (600-1)	2680-1 575 (600-1)	2780-2 675 (700-2)	2780-2¼ 675 (700-2¼)



NE-3, 14 JUL 2022 to 11 AUG 2022

NE-3, 14 JUL 2022 to 11 AUG 2022