

(GED1.ATR) 18312

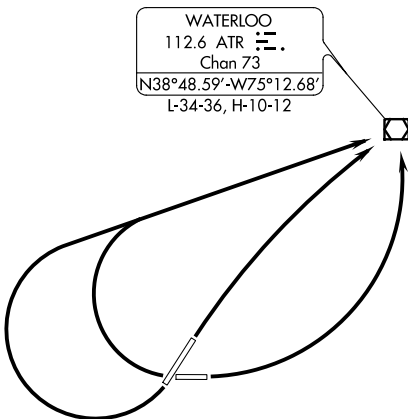
AL-935 (FAA)

DELAWARE COASTAL (GED)  
GEORGETOWN, DELAWARE

# GEORGETOWN ONE DEPARTURE

DOVER APP CON  
132.425 257.875  
DOVER CLNC DEL  
125.55  
ASOS  
118.375  
UNICOM  
123.0

**TOP ALTITUDE:  
2000**



### TAKEOFF MINIMUMS:

Rwys 4, 10, 28: Standard.

Rwy 22: 200-1¼ or standard with a minimum climb of 201' per NM to 300, or alternatively with standard takeoff minimums and a normal 200' per NM climb gradient, takeoff must occur no later than 1100' prior to DER.

NOTE: Chart not to scale.



### DEPARTURE ROUTE DESCRIPTION

TAKEOFF RUNWAY 4: Turn right direct ATR VOR/DME, thence . . .

TAKEOFF RUNWAY 10: Turn left direct ATR VOR/DME, thence . . .

TAKEOFF RUNWAY 22: Turn right direct ATR VOR/DME, thence . . .

TAKEOFF RUNWAY 28: Turn right direct ATR VOR/DME, thence . . .

. . . maintain 2000. Expect clearance to filed altitude three (3) minutes after departure.

# GEORGETOWN ONE DEPARTURE

(GED1.ATR) 10NOV16

GEORGETOWN, DELAWARE  
DELAWARE COASTAL (GED)

NE-3, 14 JUL 2022 to 11 AUG 2022

NE-3, 14 JUL 2022 to 11 AUG 2022