

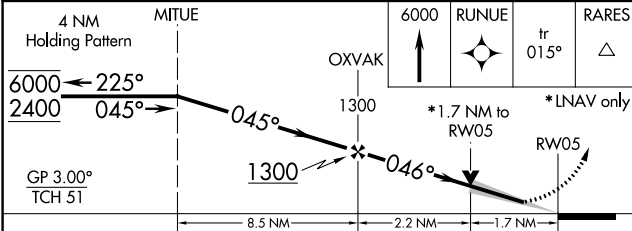
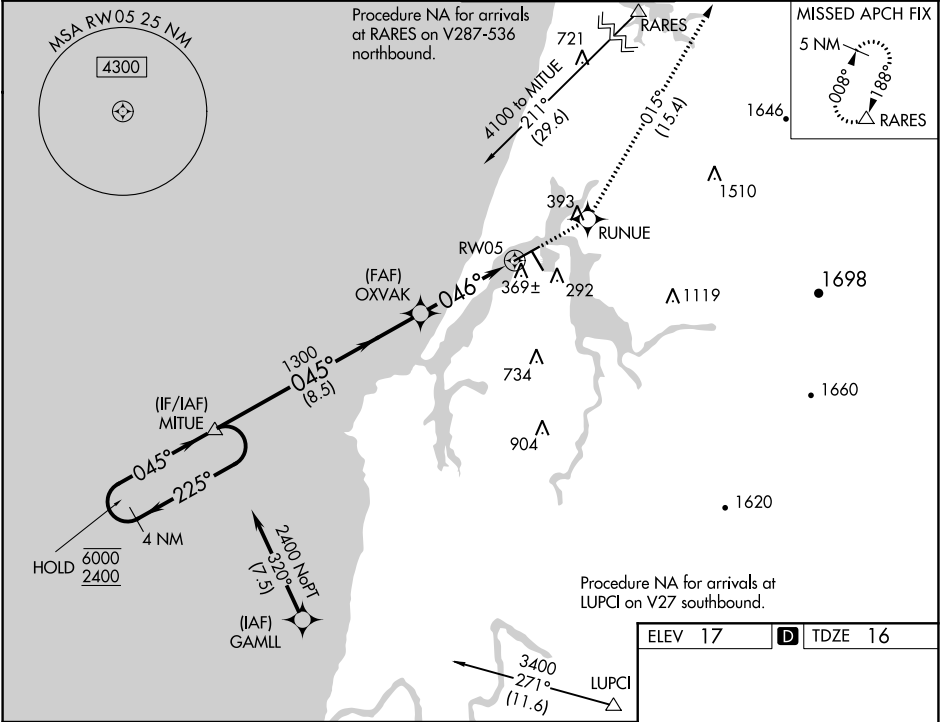
WAAS CH 82416	APP CRS 046°	Rwy Idg TDZE Apt Elev	5320 16 17
-------------------------	------------------------	-----------------------------	---------------------------------------

RNAV (GPS) Y RWY 5

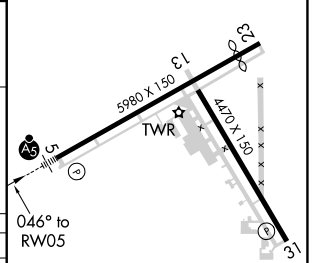
SOUTHWEST OREGON RGNL (OTH)

RNP APCH. ▼ Circling Rwy 13, 31 NA at night. For uncompensated Baro-VNAV systems, LNAV/VNAV NA below -2°C or above 54°C. For inop ALS, increase LPV all Cats visibility to ½ SM, LNAV/VNAV all Cats visibility to 1½ SM, and increase LNAV Cat C/D visibility to 1¾ SM. ▲ MALSR	MALS AS	MISSED APPROACH: Climb to 6000 direct RUNUE and on track 015° to RARES and hold, continue climb-in-hold to 6000.
---	------------	--

AWOS-3PT 135.075	SEATTLE CENTER 127.55 254.35	NORTH BEND TOWER* 118.45 (CTAF) 0	GND CON 127.1
----------------------------	--	---	-------------------------



ELEV 17	TDZE 16
---------	---------



CATEGORY	A	B	C	D
LPV DA		319-½	303 (400-½)	
LNAV/VNAV DA		550-1⅜	534 (600-1⅜)	
LNAV MDA	620-½	604 (700-½)	620-1⅜	604 (700-1⅜)
CIRCLING	680-1 663 (700-1)	820-1 803 (900-1)	1100-3 1083 (1100-3)	1160-3 1143 (1200-3)

HIRL Rwy 5-23
MIRL Rwy 13-31
REIL Rwys 13, 23 and 31

NW-1, 14 JUL 2022 to 11 AUG 2022

NW-1, 14 JUL 2022 to 11 AUG 2022