

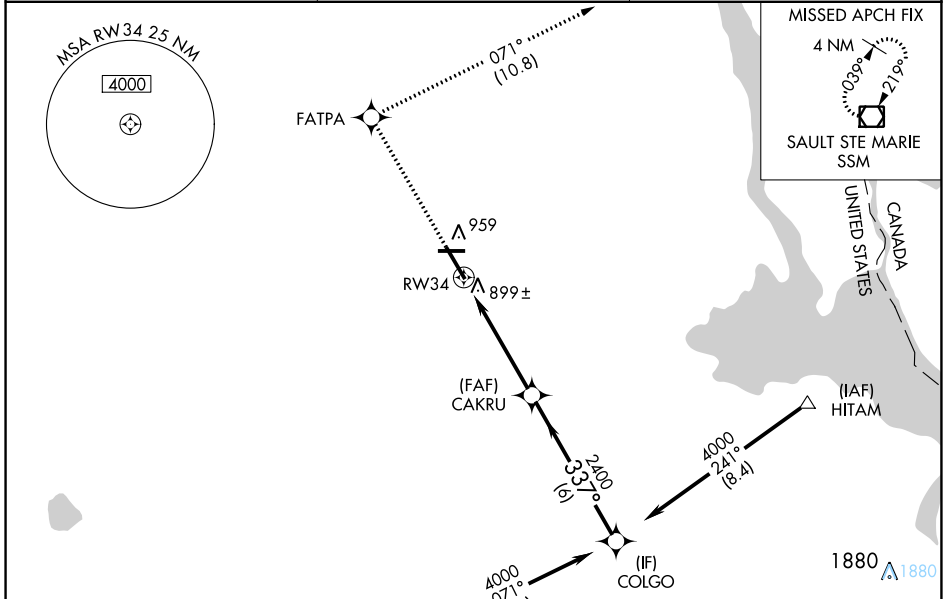
WAAS CH <b>56315</b> <b>W34A</b>	APP CRS <b>337°</b>	Rwy Idg TDZE Apt Elev	<b>7203</b> <b>796</b> <b>799</b>
--	------------------------	-----------------------------	---

# RNAV (GPS) RWY 34

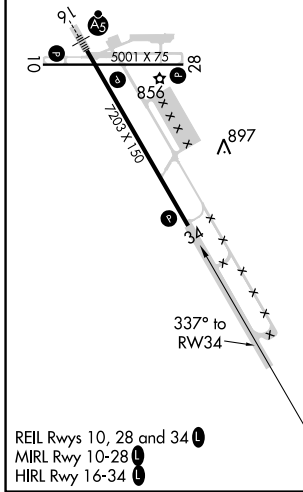
CHIPPEWA COUNTY INTL (CIU)

RNP APCH.	<p>▼ For uncompensated Baro-VNAV systems, LNAV/VNAV NA below -16°C or above 54°C.                  ▲ When local altimeter setting not received, use Sault Ste Marie Muni/Sanderson Fld altimeter setting; increase LPV DA to 1091 feet, LNAV/VNAV DA to 1243 feet and all MDA 60 feet; increase LNAV Cat D visibility ¼ SM. Baro-VNAV and VDP NA when using Sault Ste Marie Muni/Sanderson Fld altimeter setting.</p>	<p>MISSED APPROACH:                  Climb to 3000 direct FATPA and track 071° to SSM VOR/DME and hold.</p>
-----------	---	---

AWOS-3PT <b>127.575</b>	TORONTO CENTER <b>132.65 344.5</b>	UNICOM <b>123.0 (CTAF)</b>
----------------------------	---------------------------------------	-------------------------------



ELEV 799	<b>D</b>	TDZE 796
----------	----------	----------



SAULT STE MARIE, MICHIGAN  
 Amdt 1B 08OCT20

Procedure NA for arrival at PINES via V193 southbound.

COLGO	CAKRU	FATPA	tr 071°	SSM
4000	2400	3000		
GP 3.00° TCH 40	337°			
	2400			
	6 NM	3.7 NM	1.2 NM	
CATEGORY	A	B	C	D
LPV DA		1046-1	250 (300-1)	
LNAV/DA VNAV		1198-1½	402 (400-1½)	
LNAV MDA	1200-1	404 (400-1)	1200-1¼	404 (400-1¼)
<b>C</b> CIRCLING	1260-1	461 (500-1)	1260-1½	1360-2
			461 (500-1½)	561 (600-2)

\*1.2 NM to RW34 \*LNAV only.

EC-1, 14 JUL 2022 to 11 AUG 2022

EC-1, 14 JUL 2022 to 11 AUG 2022