

MARYSVILLE, CALIFORNIA

# RNAV (GPS) RWY 15

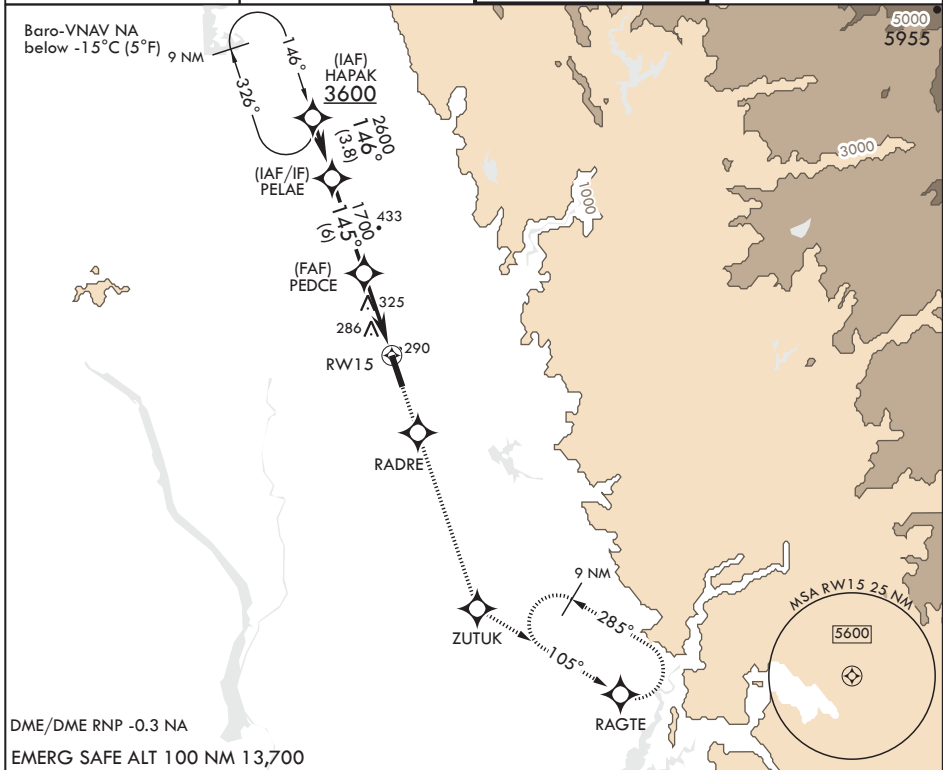
APCH CRS	Rwy Idg	12,001
145°	THRE	113
	Arpt Elev	113

AL-771 (USAF)

BEALE AFB (KBAB)

<p><b>▼</b> * When ALS inop, increase vis to 2 1/2 miles.                  ** When ALS inop, increase CAT AB RVR to 55 and vis to 1 mile, CAT CDE vis to 1 3/8 miles.                  *** Circling not authorized E of Rwy 15-33.</p>	<p>ALSF-1</p>	<p>MISSED APPROACH: Climb direct RADRE, then track 145° to ZUTUK, then turn left and track 105° to RAGTE and hold, maintain 3600.</p>
--	---------------	---

<p>ATIS★</p> <p>124.55 273.5</p>	<p>NORCAL APP CON</p> <p>125.4 259.1</p>	<p>TOWER★</p> <p>119.4 284.75</p>	<p>GND CON</p> <p>121.6 257.75</p>
----------------------------------	--	-----------------------------------	------------------------------------



<p>PELAE</p> <p>2600</p> <p>GP 2.75° TCH 47</p>	<p>VGSI and descent angles not coincident.</p> <p>145°</p> <p>1700</p> <p>PEDCE</p>	<p>3600</p> <p>RADRE</p> <p>tr 145°</p> <p>ZUTUK</p> <p>ELEV 113</p>	<p>THRE 113</p> <p>219</p> <p>145° to RW15</p> <p>256</p> <p>BCN 240</p> <p>TWR 274</p> <p>12,001-300</p> <p>33</p>		
<p>† LNAV only</p> <p>† 1.6 NM to RW15</p> <p>5.2 NM</p>		<p>HIRL all Rwys</p>			
CATEGORY	A	B	C	D	E
LNAV/VNAV DA*	680-1%		567	(600-1%)	
LNAV MDA**	620/24 507 (600-1/2)		620/55	507	(600-1)
CIRCLING***	620-1 507 (600-1)	640-1 527 (600-1)	660-1 1/2 547 (600-1/2)	680-2 567 (600-2)	840-2 1/2 727 (800-2/2)

MARYSVILLE, CALIFORNIA

39°08'N - 121°26'W

BEALE AFB (KBAB)

Amdt 1 20JUL17

# RNAV (GPS) RWY 15

SW-2, 14 JUL 2022 to 11 AUG 2022

SW-2, 14 JUL 2022 to 11 AUG 2022