

LOC I-PWA 110.15	APP CRS 175°	Rwy Idg 6844
		TDZE 1291
		Apt Elev 1300

ILS or LOC RWY 17L

WILEY POST (PWA)

DME or RADAR required.



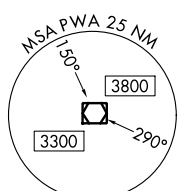
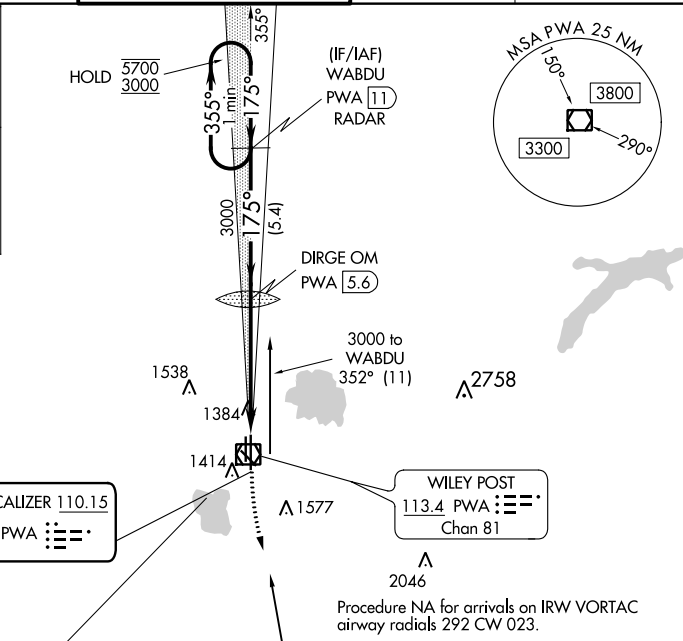
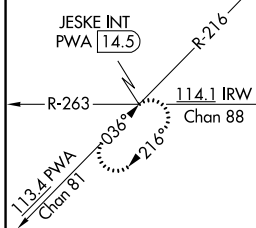
MALSR



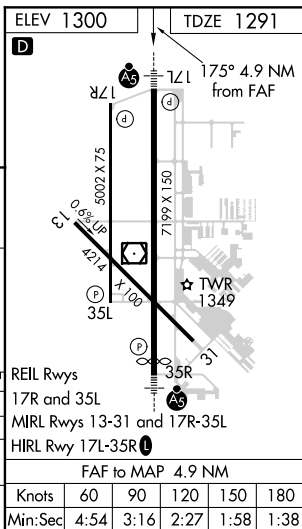
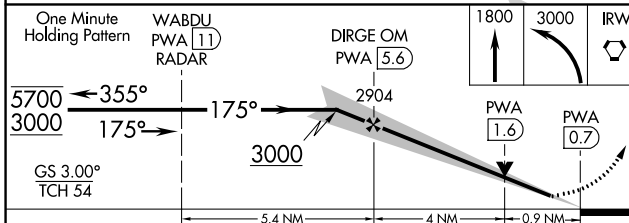
MISSED APPROACH: Climb to 1800 then climbing left turn to 3000 direct IRW VORTAC and hold.

ATIS 128.725	OKC CITY APP CON 124.6 266.8	WILEY POST TOWER * 126.9 (CTAF) 0 306.9	GND CON 121.7	UNICOM 122.95
------------------------	--	--	-------------------------	-------------------------

ALTERNATE MISSED APCH FIX



Procedure NA for arrivals on IRW VORTAC airway radials 292 CW 023.



CATEGORY	A	B	C	D
S-ILS 17L		1491-1/2	200 (200-1/2)	
S-LOC 17L	1640-1/2	349 (400-1/2)	1640-5/8	349 (400-5/8)
C CIRCLING	1780-1	480 (500-1)	1880-1/2 580 (600-1/2)	1880-2 580 (600-2)

FAF to MAP 4.9 NM					
Knots	60	90	120	150	180
Min:Sec	4:54	3:16	2:27	1:58	1:38

SC-1, 14 JUL 2022 to 11 AUG 2022

SC-1, 14 JUL 2022 to 11 AUG 2022