

VORTAC OSH 116.75 Chan 114 (Y)	APP CRS 265°	Rwy Idg TDZE 786 Apt Elev 808
--	------------------------	---

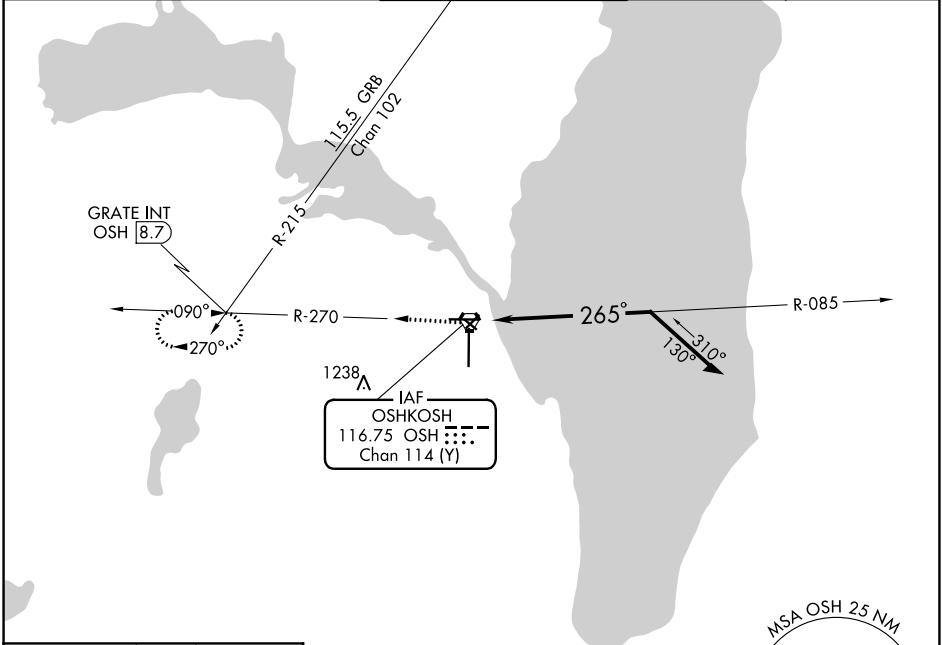
VOR RWY 27

WITTMAN RGNL (OSH)

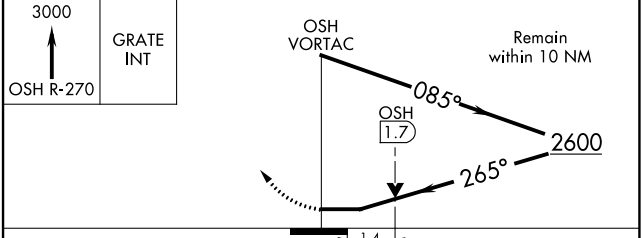
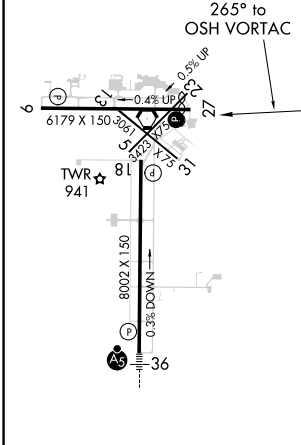
▼ Circling to Rwy 5, 23, and 31 NA at night. When local altimeter setting not received, use Fond Du Lac altimeter setting and increase all MDA 40 feet; increase S-27 Cats C and D visibility ¼ mile and Circling Cat C visibility ⅓ mile, and Cat D ¼ mile. VDP NA with Fond Du Lac altimeter setting. Helicopter visibility reduction below ¾ SM NA.

MISSED APPROACH: Climb to 3000 on OSH VORTAC R-270 to GRATE INT/OSH 8.7 DME and hold.

ATIS 125.9	MILWAUKEE APP CON 127.0 263.075	OSHKOSH TOWER ★ 118.5 (CTAF) 290.9	GND CON 132.3	UNICOM 122.95
----------------------	---	--	-------------------------	-------------------------



ELEV 808	D	TDZE 786
-----------------	----------	-----------------



CATEGORY	A	B	C	D
S-27	1280-1	494 (500-1)	1280-1⅓ 494 (500-1⅓)	
C CIRCLING	1280-1 472 (500-1)	1300-1 492 (500-1)	1360-1½ 552 (600-1½)	1440-2 632 (700-2)

EC-3, 14 JUL 2022 to 11 AUG 2022

EC-3, 14 JUL 2022 to 11 AUG 2022