

LOC I-OSH 110.5	APP CRS 184°	Rwy Idg TDZE Apt Elev	8002 794 808
---------------------------	------------------------	-----------------------------	---

LOC/DME BC RWY 18

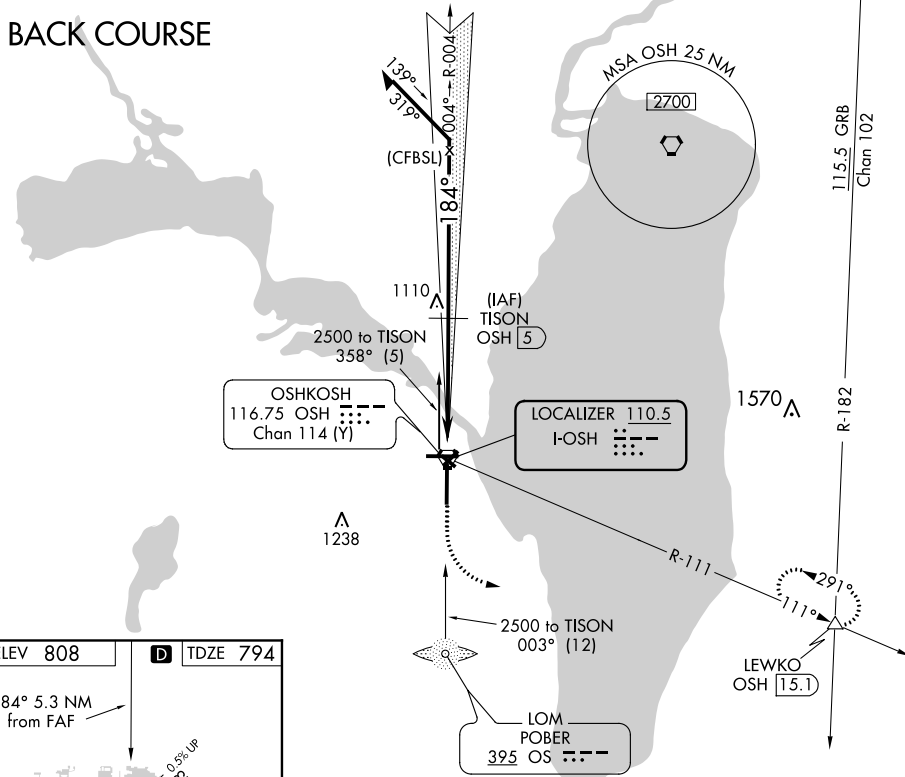
WITTMAN RGNL (OSH)

⚠ Simultaneous reception of I-OSH and OSH DME required. DME from OSH VORTAC.
 ⚠ When local altimeter setting not received, use Fond Du Lac altimeter setting and increase all MDA 40 feet; increase Circling Cat D visibility ¼ mile. Circling to Rwy 5, 23, and 31 NA at night. Helicopter visibility reduction below ¾ SM NA.

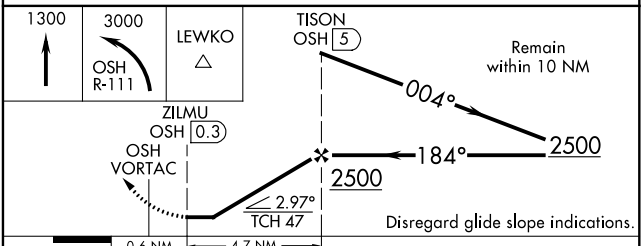
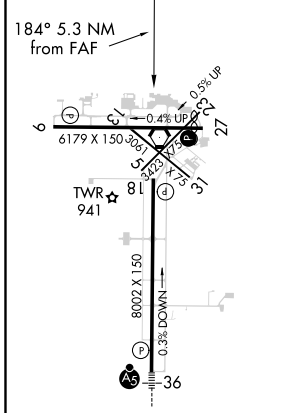
MISSED APPROACH: Climb to 1300 then climbing left turn to 3000 on OSH R-111 to LEWKO INT/OSH 15.1 DME and hold.

ATIS 125.9	MILWAUKEE APP CON 127.0 263.075	OSHKOSH TOWER ★ 118.5 (CTAF) 290.9	GND CON 132.3	UNICOM 122.95
----------------------	---	--	-------------------------	-------------------------

BACK COURSE



ELEV 808	D	TDZE 794
----------	----------	----------



CATEGORY	A	B	C	D
S-18	1240-1	446 (500-1)	1240-1⅓	446 (500-1⅓)
C CIRCLING	1280-1	1300-1	1360-1½	1440-2
	472 (500-1)	492 (500-1)	552 (600-1½)	632 (700-2)

REIL Rws 18 and 27
 HIRL Rws 9-27 and 18-36

EC-3, 14 JUL 2022 to 11 AUG 2022

EC-3, 14 JUL 2022 to 11 AUG 2022