

WAAS CH <b>78218</b> <b>W27A</b>	APP CRS <b>267°</b>	Rwy Idg TDZE Apt Elev	<b>4000</b> <b>974</b> <b>979</b>
--	------------------------	-----------------------------	---

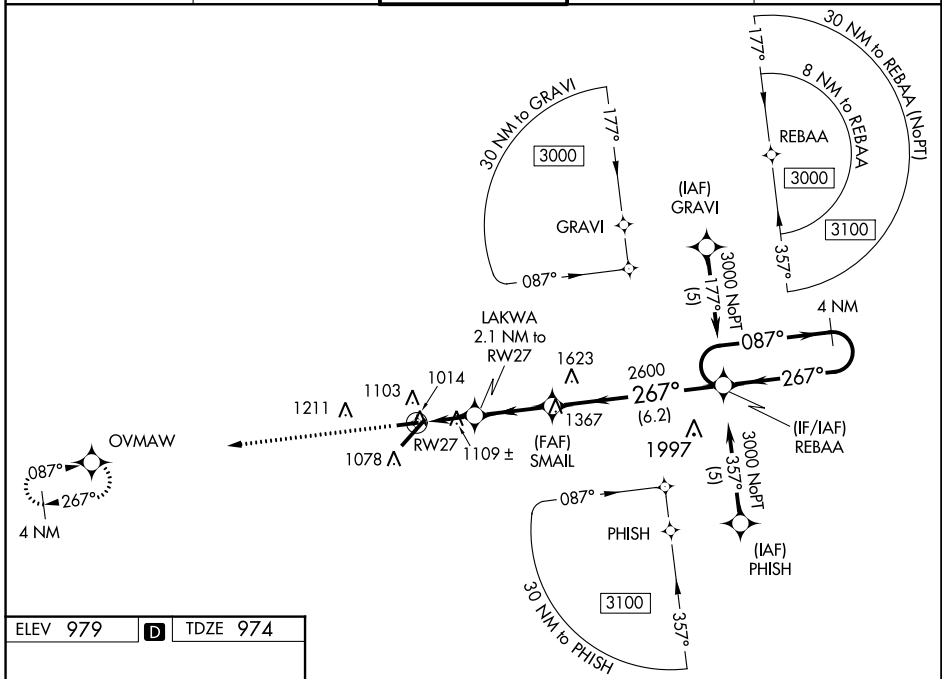
# RNAV (GPS) RWY 27

## BLUE GRASS (LEX)

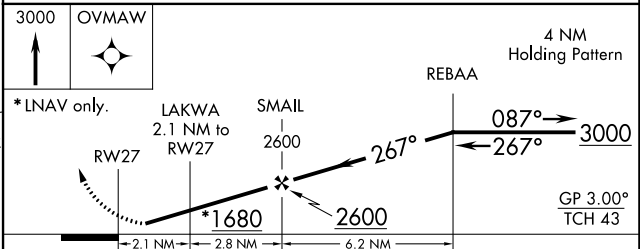
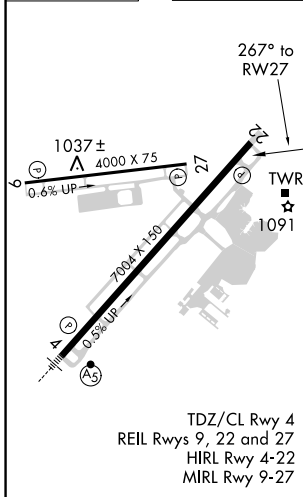
**⚠** Baro-VNAV NA when using Frankfort altimeter setting. For uncompensated Baro-VNAV systems, LNAV/VNAV NA below -16°C (4°F) or above 47°C (116°F). DME/DME RNP-0.3 NA. Helicopter visibility reduction below 1 SM NA. When local altimeter setting not received, use Frankfort altimeter setting; increase LPV DA to 1421 feet and all visibilities ¼ SM; increase LNAV/VNAV DA to 1450 feet and all visibilities ¼ SM; increase all MDAs 80 feet and visibility Cats C and D ¼ SM.

**MISSED APPROACH:** Climb to 3000 direct OVMAW and hold.

ATIS <b>126.3</b>	LEXINGTON APP CON <b>120.15 259.3</b>	LEXINGTON TOWER <b>119.1 257.8</b>	GND CON <b>121.9</b>	CLNC DEL <b>132.35</b>
----------------------	--	---------------------------------------	-------------------------	---------------------------



ELEV 979	<b>D</b>	TDZE 974
----------	----------	----------



CATEGORY	A	B	C	D
LPV DA		1359-1¼	385 (400-1¼)	
LNAV/VNAV DA		1388-1⅜	414 (500-1⅜)	
LNAV MDA	1360-1	386 (400-1)	1360-1⅛	386 (400-1⅛)
<b>C</b> CIRCLING	1420-1 441 (500-1)	1440-1 461 (500-1)	1520-1½ 541 (600-1½)	1600-2 621 (700-2)

SE-1, 14 JUL 2022 to 11 AUG 2022

SE-1, 14 JUL 2022 to 11 AUG 2022