

CLEGG FIVE ARRIVAL

LEXINGTON APP CON
120.15 259.3
ATIS
126.3

CINCINNATI
117.3 CVG
Chan 120
N39° 00.96' - W84° 42.20'
L-26-27, H-10

WARSA
N38° 45.80' - W84° 56.89'
VERTICAL NAVIGATION
PLANNING INFORMATION
Expect 14000.

NERVE
N38° 36.94' - W85° 05.42'
VERTICAL NAVIGATION
PLANNING INFORMATION
Expect 12000.

RDSTN
N38° 23.38'
W85° 18.38'

CLEGG
N38° 11.15'
W84° 54.14'

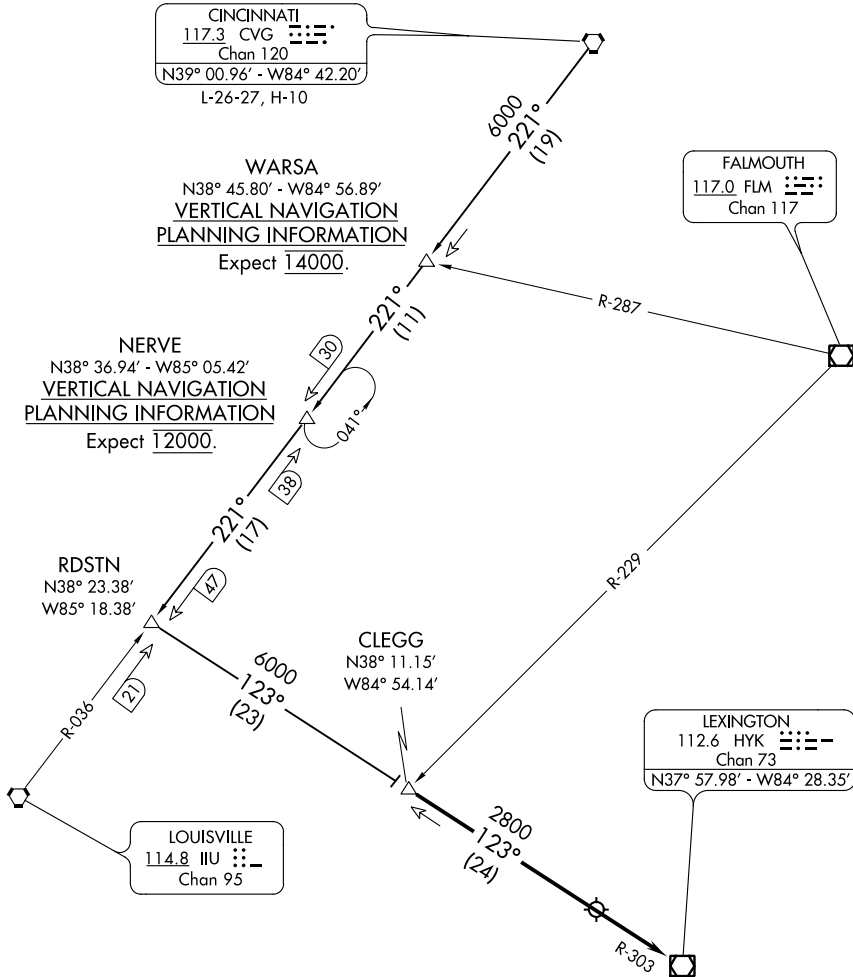
LOUISVILLE
114.8 IUU
Chan 95

FALMOUTH
117.0 FLM
Chan 117

LEXINGTON
112.6 HYK
Chan 73
N37° 57.98' - W84° 28.35'

SE-1, 14 JUL 2022 to 11 AUG 2022

SE-1, 14 JUL 2022 to 11 AUG 2022



ARRIVAL ROUTE DESCRIPTION

CINCINNATI TRANSITION (CVG.CLEGG5):

From over CVG VORTAC on CVG R-221 to RDSTN then on HYK VOR/DME R-303 to CLEGG. Thence...

...from over CLEGG on HYK R-303 to HYK VOR/DME. Expect radar vectors to final approach course after CLEGG.

NOTE: RADAR required.
NOTE: DME required.

NOTE: Chart not to scale.