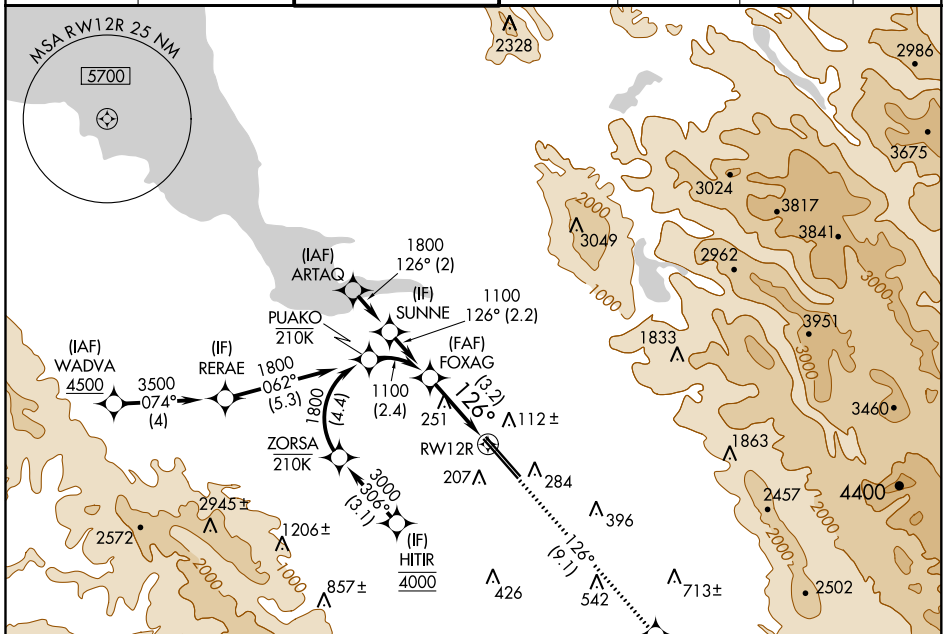


APP CRS	Rwy Idg	<b>8587</b>
<b>126°</b>	TDZE	<b>46</b>
	Apt Elev	<b>62</b>

# RNAV (RNP) Z RWY 12R

NORMAN Y MINETA SAN JOSE INTL (SJC)

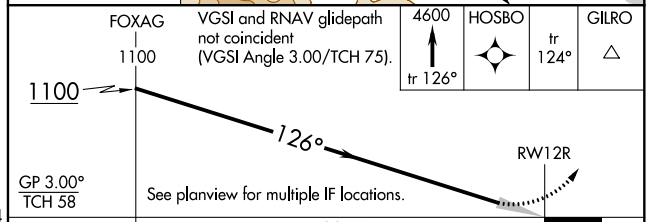
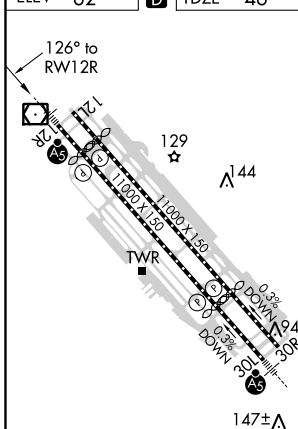
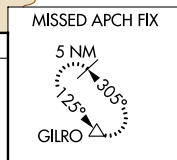
RNP AR APCH-GPS.				MALSR	MISSED APPROACH: Climb to 4600 on track 126° to HOSBO and track 124° to GILRO and hold.		
▼ For uncompensated Baro-VNAV systems, procedure NA below 0°C or above 54°C. For inop ALS, increase RNP 0.15 all Cats visibility to RVR 5500.							
D-ATIS	NORCAL APP CON	SAN JOSE TOWER*	GND CON	CLNC DEL	CPDLC	UNICOM	
<b>126.95</b>	<b>120.1 290.25</b>	<b>124.0 (CTAF) 257.6</b>	<b>121.7</b>	<b>118.0</b>		<b>122.95</b>	



SW-2, 14 JUL 2022 to 11 AUG 2022

SW-2, 14 JUL 2022 to 11 AUG 2022

ELEV	<b>62</b>	TDZE	<b>46</b>
------	-----------	------	-----------



CATEGORY	A	B	C	D
RNP 0.15 DA		394/30	348 (400- <sup>5</sup> / <sub>4</sub> )	
RNP 0.30 DA		486/40	440 (500- <sup>3</sup> / <sub>4</sub> )	

REIL Rwy 12L  
HIRL Rwys 12L-30R and 12R-30L

## AUTHORIZATION REQUIRED