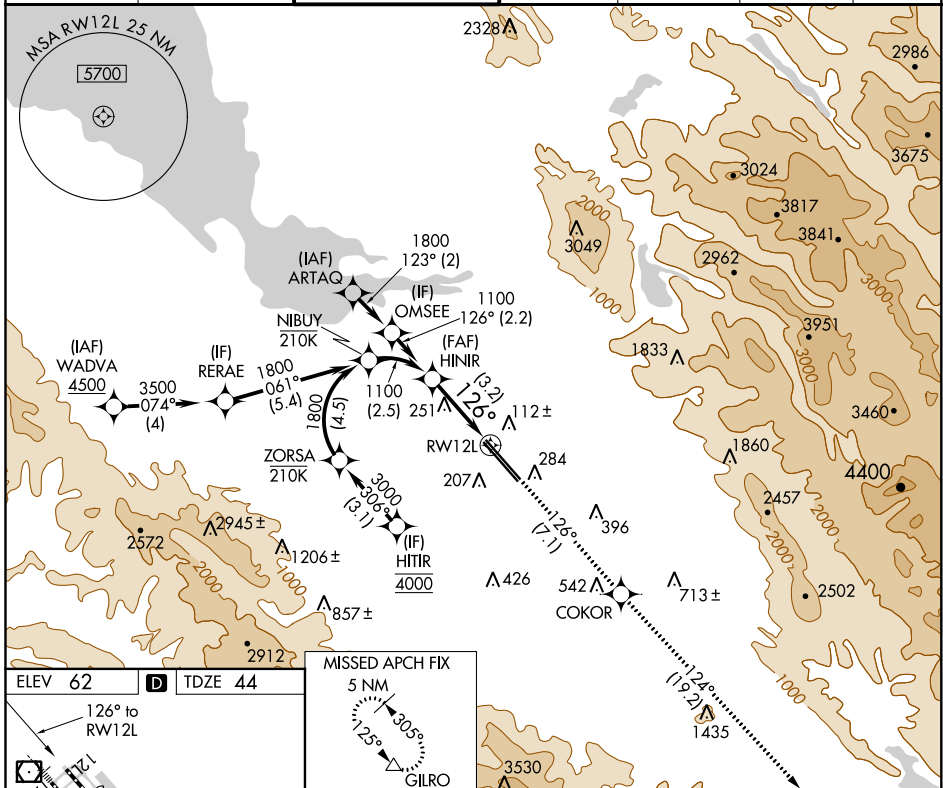


APP CRS	Rwy Idg	8831
126°	TDZE	44
	Apt Elev	62

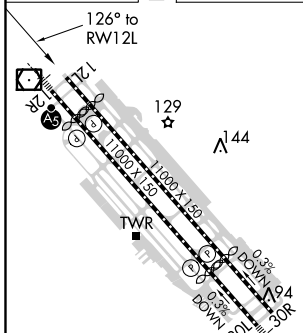
RNAV (RNP) Z RWY 12L

NORMAN Y MINETA SAN JOSE INTL (SJC)

RNP AR APCH-GPS.			MISSED APPROACH: Climb to 4600 on track 126° to COKOR and track 124° to GILRO and hold.						
▼ For uncompensated Baro-VNAV systems, procedure NA below 0°C or above 54°C.			D-ATIS	NORCAL APP CON	SAN JOSE TOWER*	GND CON	CLNC DEL	CPDLC	UNICOM
			126.95	120.1 290.25	124.0 (CTAF) 0 257.6	121.7	118.0		122.95



ELEV 62	D	TDZE 44
---------	----------	---------



HINIR	VGSI and RNAV glidepath not coincident (VGSI Angle 3.00/TCH 70).	4600	COKOR	GILRO
1100		↑	tr 124°	△
1100		tr 126°		
GP 3.00° TCH 57				
See planview for multiple IF locations.				
3.2 NM				

CATEGORY	A	B	C	D
RNP 0.18 DA		400-1	356 (400-1)	
RNP 0.30 DA		451-1½	407 (400-1½)	

AUTHORIZATION REQUIRED

SW-2, 14 JUL 2022 to 11 AUG 2022

SW-2, 14 JUL 2022 to 11 AUG 2022