

RAZRR FIVE ARRIVAL (RNAV) Arrival Routes

SAN JOSE, CALIFORNIA

SW-2, 14 JUL 2022 to 11 AUG 2022

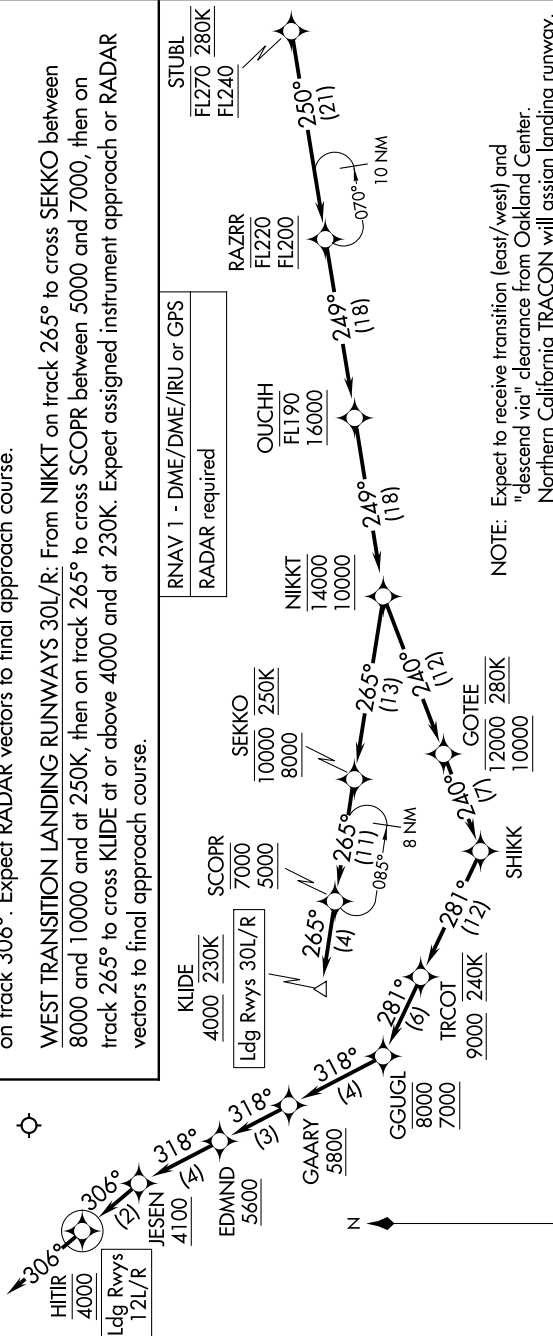
ARRIVAL ROUTE DESCRIPTION

From STUBL on track 250° to cross RAZRR between FL200 and FL220, then on track 249° to cross OUCHH between 16000 and FL190, then on track 249° to cross NIKKT between 10000 and 14000.

EAST TRANSITION LANDING RUNWAYS 12L/R: From NIKKT on track 240° to cross GOTEE between 10000 and 12000 and at 280K, then on track 240° to SHIKK, then on track 281° to cross TRCOT at or above 9000 and at 240K, then on track 281° to cross GGUGL between 7000 and 8000, then on track 318° to cross GAARY at or above 5800, then on track 318° to cross EDMND at or above 5600, then on track 318° to cross JESEN at or above 4100, then on track 306° to cross HITIR at 4000, then on track 306°. Expect RADAR vectors to final approach course.

WEST TRANSITION LANDING RUNWAYS 30L/R: From NIKKT on track 265° to cross SEKKO between 8000 and 10000 and at 250K, then on track 265° to cross SCOPR between 5000 and 7000, then on track 265° to cross KLIDE at or above 4000 and at 230K. Expect assigned instrument approach or RADAR vectors to final approach course.

OAKLAND CENTER
121.25 327.0
NORCAL APP CON
126.475 317.775
D-ATIS
126.95
SAN JOSE TOWER*
124.0 257.6
GND CON
121.7



RNAV 1 - DME/DME/IRU or GPS
RADAR required

KLIDE 4000 230K
Ldg Rwy 30L/R

SCOPR 7000 5000

SEKKO 10000 250K 8000

NIKKT 14000 10000

OUCHH FL190 16000

RAZRR FL220 FL200

STUBL FL270 280K FL240

NOTE: Expect to receive transition (east/west) and "descend via" clearance from Oakland Center. Northern California TRACON will assign landing runway.
NOTE: West transition indicates Rwy 30L/R.
NOTE: East transition indicates Rwy 12L/R.
NOTE: Expect west transition unless otherwise advised.

NOTE: Chart not to scale.

SW-2, 14 JUL 2022 to 11 AUG 2022

RAZRR FIVE ARRIVAL (RNAV) Arrival Routes

SAN JOSE, CALIFORNIA