


| | | |
|--|------------------------|---|
| LOC/DME I-SJC 110.9 Chan 46 | APP CRS 306° | Rwy Idg 7614 TDZE 57 Apt Elev 62 |
|--|------------------------|---|

ILS RWY 30L (SA CAT I & II)

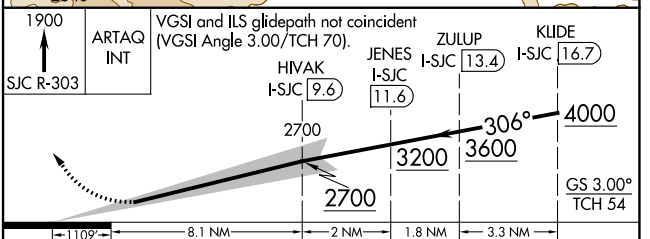
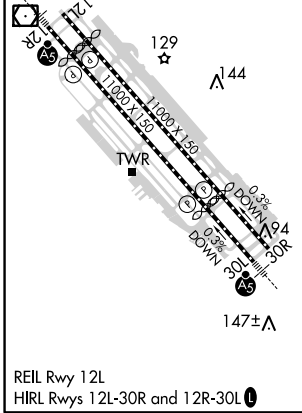
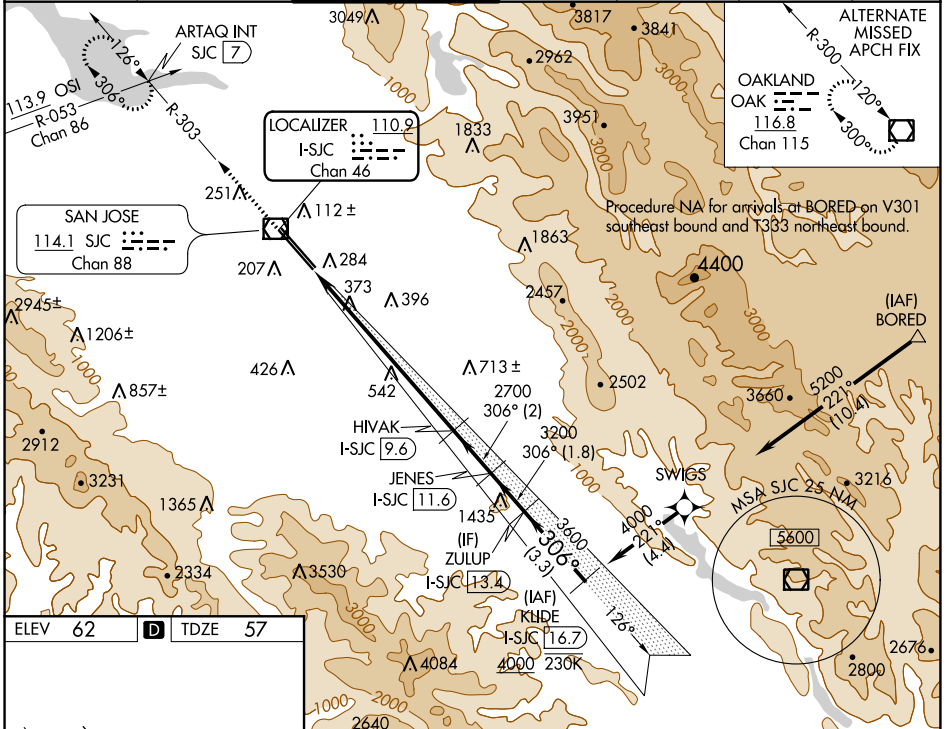
NORMAN Y MINETA SAN JOSE INTL (SJC)

RNAV 1-GPS or RADAR required for procedure entry. DME required.
From BORED: RNAV 1-GPS required.

MALSR  MISSED APPROACH: Climb to 1900 on SJC VOR/DME R-303 to ARTAQ INT/SJC 7 DME and hold.

SA CAT I: Requires specific OPSPEC, MSPEC, or LOA approval and use of HUD to DH.
SA CAT II: Reduced lighting: requires specific OPSPEC, MSPEC, or LOA approval and use of autoland or HUD to touchdown. SA CAT I/II: Procedure NA when tower closed.

| | | | | | | |
|-------------------------|---------------------------------------|---|-------------------------|--------------------------|-------|-------------------------|
| D-ATIS 126.95 | NORCAL APP CON 120.1 290.25 | SAN JOSE TOWER* 124.0 (CTAF) 0 257.6 | GND CON 121.7 | CLNC DEL 118.0 | CPDLC | UNICOM 122.95 |
|-------------------------|---------------------------------------|---|-------------------------|--------------------------|-------|-------------------------|



| | | | | |
|-----------|-----------|-----------|------------|---|
| CATEGORY | A | B | C | D |
| S-ILS 30L | SA CAT I | RA 147/14 | 150 DA 207 | |
| S-ILS 30L | SA CAT II | RA 97/12 | 100 DA 157 | |

SA CATEGORY I & II ILS - SPECIAL AIRCREW AND AIRCRAFT CERTIFICATION REQUIRED

SW-2, 14 JUL 2022 to 11 AUG 2022

SW-2, 14 JUL 2022 to 11 AUG 2022