

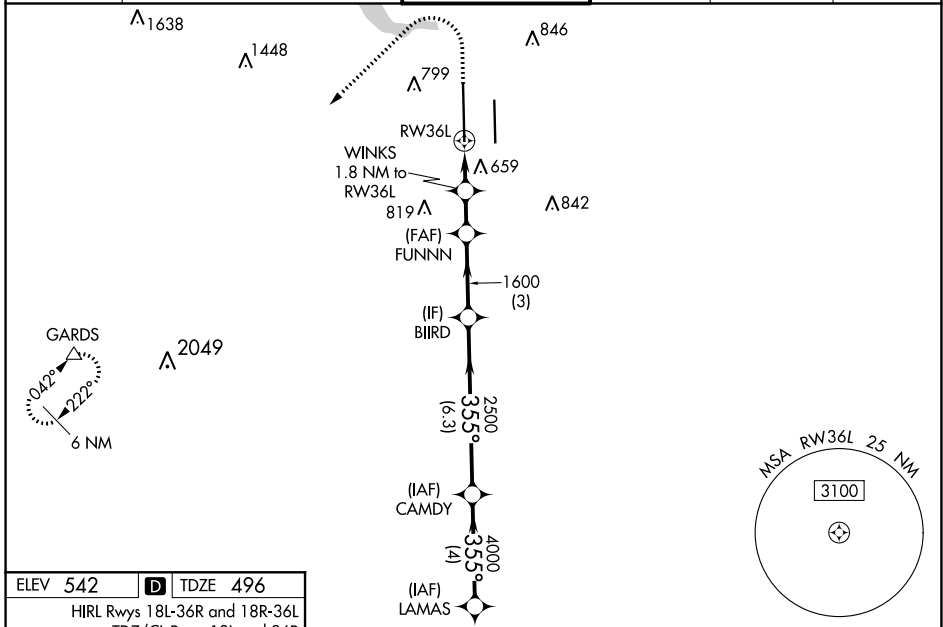
WAAS CH <b>90229</b> <b>W36A</b>	APP CRS <b>355°</b>	Rwy Idg <b>12250</b> TDZE <b>496</b> Apt Elev <b>542</b>
--	------------------------	--

# RNAV (GPS) Y RWY 36L

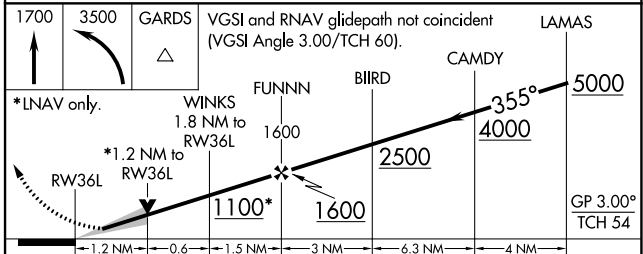
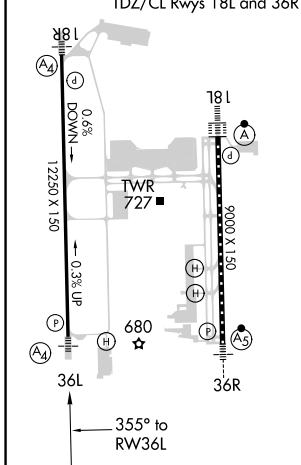
AUSTIN-BERGSTROM INTL (AUS)

RNP APCH-GPS.	<p>Simultaneous approach authorized. LNAV procedure NA during simultaneous operations. Use of FD or AP required during simultaneous operations. For uncompensated Baro-VNAV systems, LNAV/VNAV NA below -5°C or above 54°C. For inop ALS, increase LNAV/ VNAV Cat E visibility to 1 3/8 SM, LNAV Cat E visibility to 1 1/4 SM. Inop table does not apply to LPV all Cats.</p>	<p>MALS</p>	<p>MISSED APPROACH: Climb to 1700 then climbing left turn to 3500 direct GARDS and hold.</p>
---------------	---	-------------	--

D-ATIS <b>124.4</b>	AUSTIN APP CON <b>127.225 317.65</b> (EAST) <b>120.875 270.25</b> (SOUTH) <b>119.0 370.85</b> (WEST)	AUSTIN TOWER <b>121.0 281.5</b>	GND CON <b>121.9 348.6</b>	CLNC DEL <b>125.5 263.0</b>	CPDLC
------------------------	---	------------------------------------	-------------------------------	--------------------------------	-------



ELEV <b>542</b>	<b>D</b> TDZE <b>496</b>
HIRL Rwy's 18L-36R and 18R-36L TDZ/CL Rwy's 18L and 36R	



CATEGORY	A	B	C	D	E
LPV DA		696/40	200 (200-3/4)		
LNAV/VNAV DA		970/60	474 (500-1 1/4)		
LNAV MDA	920/40	424 (400-3/4)	920/50	424 (400-1)	
<b>C</b> CIRCLING	1040-1 498 (500-1)	1120-1 578 (600-1)	1200-1 3/4 658 (700-1 1/4)	1200-2 658 (700-2)	1520-3 978 (1000-3)